



[Go to Product page](#)

Datasheet for ABIN1352275
ECE2 Protein (AA 1-255) (GST tag)

1 Image

Overview

Quantity:	10 µg
Target:	ECE2
Protein Characteristics:	AA 1-255
Origin:	Human
Source:	Wheat germ
Protein Type:	Recombinant
Purification tag / Conjugate:	This ECE2 protein is labelled with GST tag.
Application:	Western Blotting (WB), ELISA, Antibody Array (AA), Affinity Purification (AP)

Product Details

Purpose:	ECE2 (Human) Recombinant Protein (P01)
Sequence:	MASPGAGRAP PELPERNCGY REVEYWDQRY QGAADSAPYD WFGDFSSFRA LLEPELRPED RILVLGCGNS ALSYELFLGG FPNVTSVDYS SVVVAAMQAR YAHVPQLRWE TMDVRKLDFF SASFVLEK GTLDALLAGE RDPWTVSSEG VHTVDQVLSE VSRVLPVGGF FISMTSAAPH FRTRHYAQAY YGWSLRHATY GSGFHFHLYL MHKGGKLSVA QLALGAQILS PPRPPTSPCF LQSDHEDFL SAIQL
Characteristics:	Human ECE2 full-length ORF (NP_115707.1, 1 a.a. - 255 a.a.) recombinant protein with GST-tag at N-terminal.
Purification:	in vitro wheat germ expression system

Target Details

Target:	ECE2
Alternative Name:	ECE2 (ECE2 Products)
Background:	Full Gene Name: endothelin converting enzyme 2 Synonyms: KIAA0604,MGC17664,MGC2408,MGC78487
Gene ID:	9718
NCBI Accession:	NM_032331
Pathways:	Regulation of G-Protein Coupled Receptor Protein Signaling

Application Details

Application Notes:	Optimal working dilution should be determined by the investigator.
Comment:	Preparation method: in vitro, wheat germ expression system Product Quality tested by: 12.5% SDS-PAGE Stained with Coomassie Blue.
Restrictions:	For Research Use only

Handling

Buffer:	50 mM Tris-HCl, 10 mM reduced Glutathione, pH =8.0 in the elution buffer.
Handling Advice:	Aliquot to avoid repeated freezing and thawing.
Storage:	-80 °C
Storage Comment:	Best use within three months from the date of receipt of this protein.

Images

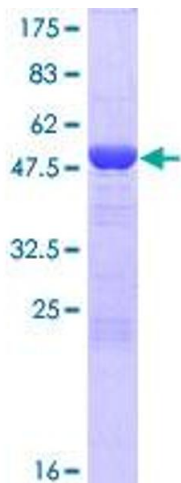


Image 1.