



[Go to Product page](#)

Datasheet for ABIN1352277

ECEL1 Protein (AA 1-775) (GST tag)

1 Image

Overview

Quantity:	25 µg
Target:	ECEL1
Protein Characteristics:	AA 1-775
Origin:	Human
Source:	Wheat germ
Protein Type:	Recombinant
Purification tag / Conjugate:	This ECEL1 protein is labelled with GST tag.
Application:	ELISA, Western Blotting (WB), Antibody Array (AA), Affinity Purification (AP)

Product Details

Purpose:	ECEL1 (Human) Recombinant Protein (P01)
Sequence:	MEPPYSLTAH YDEFQEVKYV SRCGAGGARG ASLPPGFPLG AARSATGARS GLPRWNRREV CLLSGLVFAA GLCAILAAML ALKYLGPVAA GGGACPEGCP ERKAFARAAR FLAANLDASI DPCQDFYSFA CGGWLRRHAI PDDKLYGTI AAIGE QNEER LRLLARPGG GPGGAAQRKV RAFFRSCLDM REIERLGPRP MLEVIEDCGG WDLGGAEERP GVAARWDLNR LLYKAQGVYS AAALFSLTVS LDDRNSSRYV IRIDQDGLTL PERTLYLAQD EDSEKILAAY RVFMERVLSL LGADAVEQKA QEILQVEQQL ANITVSEYDD LRRDVSSMYN KVTLGQLQKI TPHLRWKWLL DQIFQEDFSE EEEVLLATD YMQQVSQLIR STPHRVLHNY LVWRVWVLS EHLSPFFREA LHELAQEMEG SDKPQELARV CLGQANRHFV MALGALFVHE HFSAASKAKV QQLVEDIKYI LGQRLELDW MDAETRAAAR AKLQYMMVMV GYPDFLLKPD AVDKEYEFEV HEKTYFKNIL NSIRFSIQLS VKKIRQEVDK STWLLPPQAL NAYYLPNKNQ MVFPAGILQP TLYDPDFPQS LNYGGIGTII GHELTHGYDD WGGQYDRSGN LLHWWTEASY SRFLRKAECI VRLYDNFTVY

Product Details

NQRVNGKHTL GENIADMGGL KLAYHAYQKW VREHGPEHPL PRLKYTHDQL FFIAFAQNWC
IKRRSQSIYL QVLTDKHAPE HYRVLGVSQ FEEFGRAFHC PKDSPMNPAAH KCSVW

Characteristics: Human ECEL1 full-length ORF (AAH50453.2, 1 a.a. - 775 a.a.) recombinant protein with GST-tag at N-terminal.

Purification: in vitro wheat germ expression system

Target Details

Target: ECEL1

Alternative Name: ECEL1 ([ECEL1 Products](#))

Background: Full Gene Name: endothelin converting enzyme-like 1
Synonyms: DINE,ECEX,XCE

Gene ID: 9427

Application Details

Application Notes: Optimal working dilution should be determined by the investigator.

Comment: Preparation method: in vitro, wheat germ expression system
Product Quality tested by: 12.5% SDS-PAGE Stained with Coomassie Blue.

Restrictions: For Research Use only

Handling

Buffer: 50 mM Tris-HCl, 10 mM reduced Glutathione, pH =8.0 in the elution buffer.

Handling Advice: Aliquot to avoid repeated freezing and thawing.

Storage: -80 °C

Storage Comment: Best use within three months from the date of receipt of this protein.

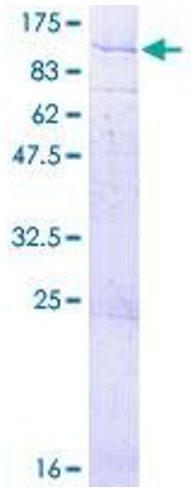


Image 1.