

Datasheet for ABIN1352280
ECH1 Protein (AA 21-120) (GST tag)



[Go to Product page](#)

1 Image

Overview

Quantity:	10 µg
Target:	ECH1
Protein Characteristics:	AA 21-120
Origin:	Human
Source:	Wheat germ
Protein Type:	Recombinant
Purification tag / Conjugate:	This ECH1 protein is labelled with GST tag.
Application:	Western Blotting (WB), ELISA, Antibody Array (AA), Affinity Purification (AP)

Product Details

Purpose:	ECH1 (Human) Recombinant Protein (Q01)
Sequence:	GSNYPGLSIS LRLTGSSAQE EASGVALGEA PDHSYESLRV TSAQKHVLHV QLNRPNKRNA MNKVFWREMV ECFNKISRDA DCRAVVISGA GKMFTAGIDL
Characteristics:	Human ECH1 partial ORF (NP_001389, 21 a.a. - 120 a.a.) recombinant protein with GST-tag at N-terminal.
Purification:	in vitro wheat germ expression system

Target Details

Target:	ECH1
Alternative Name:	ECH1 (ECH1 Products)

Target Details

Background:	Full Gene Name: enoyl Coenzyme A hydratase 1, peroxisomal Synonyms: HPXEL
Gene ID:	1891
NCBI Accession:	NM_001398
Pathways:	Monocarboxylic Acid Catabolic Process

Application Details

Application Notes:	Optimal working dilution should be determined by the investigator.
Comment:	Preparation method: in vitro, wheat germ expression system Product Quality tested by: 12.5% SDS-PAGE Stained with Coomassie Blue.
Restrictions:	For Research Use only

Handling

Buffer:	50 mM Tris-HCl, 10 mM reduced Glutathione, pH =8.0 in the elution buffer.
Handling Advice:	Aliquot to avoid repeated freezing and thawing.
Storage:	-80 °C
Storage Comment:	Best use within three months from the date of receipt of this protein.

Images

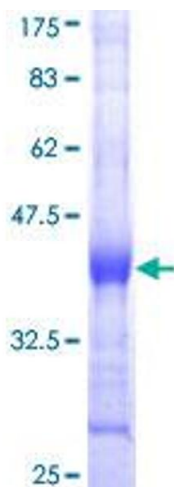


Image 1.