

Datasheet for ABIN1352299

Ectodysplasin A2 Receptor Protein (EDA2R) (AA 1-297) (GST tag)



[Go to Product page](#)

1 Image

Overview

Quantity:	10 µg
Target:	Ectodysplasin A2 Receptor (EDA2R)
Protein Characteristics:	AA 1-297
Origin:	Human
Source:	Wheat germ
Protein Type:	Recombinant
Purification tag / Conjugate:	This Ectodysplasin A2 Receptor protein is labelled with GST tag.
Application:	Western Blotting (WB), ELISA, Antibody Array (AA), Affinity Purification (AP)

Product Details

Purpose:	EDA2R (Human) Recombinant Protein (P01)
Sequence:	MDCQENEYWD QWGRCVTCQR CGPGQELSKD CGYGEGGDAY CTACPPRRYK SSWGHHRCQS CITCAVINRV QKVNCTATSN AVCGDCLPRF YRKTRIGGLQ DQECIPCTKQ TPTSEVQCAF QLSLVEADAP TVPPQEATLV ALVSSLLVWF TLAFLGLFFL YCKQFFNRHC QRGLLQFEA DKTAKEESLF PVPPSKETSA ESQVSENIQ TQPLNPILED DCSSTSGFPT QESFTMASCT SESHSHWVHS PIECTELDLQ KFSSSASYTG AETLGGNTVE STGDRLELNV PFEVPS
Characteristics:	Human EDA2R full-length ORF (NP_068555.1, 1 a.a. - 297 a.a.) recombinant protein with GST-tag at N-terminal.
Purification:	in vitro wheat germ expression system

Target Details

Target:	Ectodysplasin A2 Receptor (EDA2R)
Alternative Name:	EDA2R (EDA2R Products)
Background:	Full Gene Name: ectodysplasin A2 receptor Synonyms: EDA-A2R, EDAA2R, TNFRSF27, XEDAR
Gene ID:	60401
NCBI Accession:	NM_021783

Application Details

Application Notes:	Optimal working dilution should be determined by the investigator.
Comment:	Preparation method: in vitro, wheat germ expression system Product Quality tested by: 12.5% SDS-PAGE Stained with Coomassie Blue.
Restrictions:	For Research Use only

Handling

Buffer:	50 mM Tris-HCl, 10 mM reduced Glutathione, pH =8.0 in the elution buffer.
Handling Advice:	Aliquot to avoid repeated freezing and thawing.
Storage:	-80 °C
Storage Comment:	Best use within three months from the date of receipt of this protein.

Images

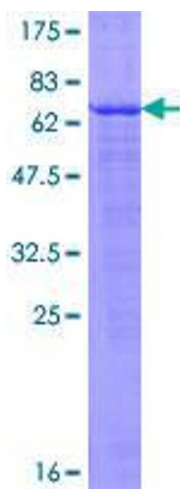


Image 1.