

## Datasheet for ABIN135232

**anti-CD45RB antibody**

## 2 Images

[Go to Product page](#)

## Overview

Quantity:	0.5 mg
Target:	CD45RB
Reactivity:	Mouse
Host:	Rat
Clonality:	Monoclonal
Conjugate:	This CD45RB antibody is un-conjugated
Application:	Flow Cytometry (FACS)

## Product Details

Immunogen:	Cloned mouse Th cell line
Clone:	C363-16A
Isotype:	IgG2a
Specificity:	Mouse CD45RB, Mr 200-240 kDa
Characteristics:	Rat Anti-Mouse CD45RB-UNLB
Purification:	Purified

## Target Details

Target:	CD45RB
Alternative Name:	CD45RB ( <a href="#">CD45RB Products</a> )
Background:	CD45RB represents an exon B-dependent form of CD45 glycoprotein. It is expressed at high

## Target Details

density on peripheral B cells, the suppressor/cytotoxic subpopulation of T lymphocytes, a subset of helper T cells, most thymocytes and at low density on macrophages and dendritic cells.

## Application Details

- Application Notes:
- **Applications:** FC - Quality tested , Sep - Reported in literature
  - **Working Dilutions:** Flow Cytometry FITC and BIOT conjugates 1 g/10<sup>6</sup> cells PE, SPRD, and AF647 conjugates 0.2 g/10<sup>6</sup> cells For flow cytometry, the suggested use of these reagents is in a final volume of 100 L

Sample Volume:	1 mL
Restrictions:	For Research Use only

## Handling

Concentration:	0.5 mg/mL
Buffer:	0.5 mg of purified immunoglobulin in 1.0 mL of borate buffered saline, pH 8.2. No preservatives or amine-containing buffer salts added
Preservative:	Without preservative
Handling Advice:	Each reagent is stable for the period shown on the bottle label if stored as directed.
Storage:	4 °C
Storage Comment:	Store at 2-8°C

## Images

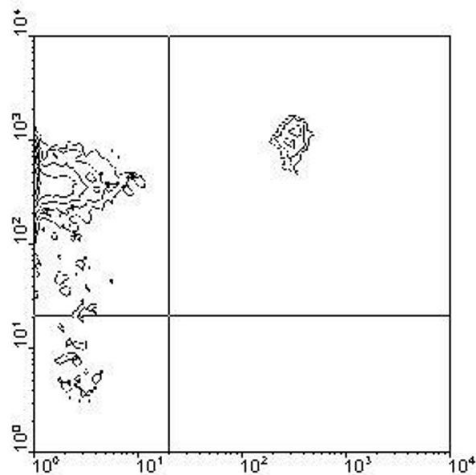
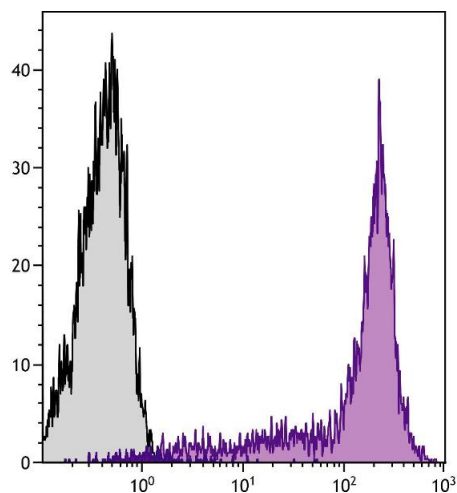


Image 1.



### Flow Cytometry

**Image 2.** BALB/c mouse splenocytes were stained with Rat Anti-Mouse CD45RB-SPRD.