



[Go to Product page](#)

Datasheet for ABIN1352320

## EDIL3 Protein (AA 1-480) (GST tag)

### 1 Image

#### Overview

Quantity:	25 µg
Target:	EDIL3 (DEL1)
Protein Characteristics:	AA 1-480
Origin:	Human
Source:	Wheat germ
Protein Type:	Recombinant
Purification tag / Conjugate:	This EDIL3 protein is labelled with GST tag.
Application:	Western Blotting (WB), ELISA, Antibody Array (AA), Affinity Purification (AP)

#### Product Details

Purpose:	EDIL3 (Human) Recombinant Protein (P01)
Sequence:	MKRSVAVWLL VGLSLGVPQF GKGDICPNP CENGGICLPG LADGSFSCEC PDGFTDPNCS SVVEVASDEE EPTSAGPCTP NPCHNGGTCE ISEAYRGDTF IGYVCKCPRG FNGIHCQHNI NECEVEPCKN GGICTDLVAN YSCECPGEFM GRNCQYKCSG PLGIEGGIIS NQQITASSTH RALFGLQKWY PYYARLNKKG LINAWTAAEN DRWPWIQINL QRKMRVTGVI TQGAKRIGSP EYIKSYKIAY SNDGKTWAMY KVKGTDNEDMV FRGNIDNNTY YANSFTPIIK AQYVRLYPQV CRRHCTLRME LLGCELSGCS EPLGMKSGHI QDYQITASSI FRTLNMMDMFT WEPRKARLDK QGKVNAWTSG HNDQSQWLQV DLLVPTKVTG IITQGAKDFG HVQFVGSYKL AYSNDGEHWT VYQDEKQRKD KVFQGNFDND THRKNVIDPP IYARHIRILP WSWYGRITLR SELLGCTEEE
Characteristics:	Human EDIL3 full-length ORF ( NP_005702.3, 1 a.a. - 480 a.a.) recombinant protein with GST-tag at N-terminal.

## Product Details

---

Purification: in vitro wheat germ expression system

## Target Details

---

Target: EDIL3 (DEL1)

Alternative Name: EDIL3 ([DEL1 Products](#))

Background: Full Gene Name: EGF-like repeats and discoidin I-like domains 3  
Synonyms: DEL1,MGC26287

Gene ID: 10085

NCBI Accession: [NM\\_005711](#)

## Application Details

---

Application Notes: Optimal working dilution should be determined by the investigator.

Comment: Preparation method: in vitro, wheat germ expression system  
Product Quality tested by: 12.5% SDS-PAGE Stained with Coomassie Blue.

Restrictions: For Research Use only

## Handling

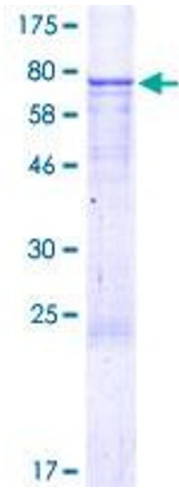
---

Buffer: 50 mM Tris-HCl, 10 mM reduced Glutathione, pH =8.0 in the elution buffer.

Handling Advice: Aliquot to avoid repeated freezing and thawing.

Storage: -80 °C

Storage Comment: Best use within three months from the date of receipt of this protein.



**Image 1.**