

Datasheet for ABIN1352321

## EDIL3 Protein (AA 101-199) (GST tag)



[Go to Product page](#)

### 1 Image

#### Overview

|                               |   |
|-------------------------------|---|
| Quantity:                     | 10 µg   |
| Target:                       | EDIL3 (DEL1)  |
| Protein Characteristics:      | AA 101-199  |
| Origin:                       | Human   |
| Source:                       | Wheat germ  |
| Protein Type:                 | Recombinant   |
| Purification tag / Conjugate: | This EDIL3 protein is labelled with GST tag.                                  |
| Application:                  | Western Blotting (WB), ELISA, Antibody Array (AA), Affinity Purification (AP) |

#### Product Details

|                  |   |
|------------------|---|
| Purpose:         | EDIL3 (Human) Recombinant Protein (Q01)   |
| Sequence:        | IGYVCKCPRG FNGIHCQHNI NECEVEPCKN GGICTDLVAN YSCECPGEFM GRNCQYKCSG<br>PLGIEGGIIS NQQITASSTH RALFGLQKWY PYYARLNKK |
| Characteristics: | Human EDIL3 partial ORF ( NP_005702, 101 a.a. - 199 a.a.) recombinant protein with GST-tag at N-terminal.       |
| Purification:    | in vitro wheat germ expression system   |

#### Target Details

|                   |   |
|-------------------|---|
| Target:           | EDIL3 (DEL1)                            |
| Alternative Name: | EDIL3 ( <a href="#">DEL1 Products</a> ) |

## Target Details

|                 |  |
|-----------------|--|
| Background:     | Full Gene Name: EGF-like repeats and discoidin I-like domains 3<br>Synonyms: DEL1,MGC26287 |
| Gene ID:        | 10085  |
| NCBI Accession: | <a href="#">NM_005711</a>  |

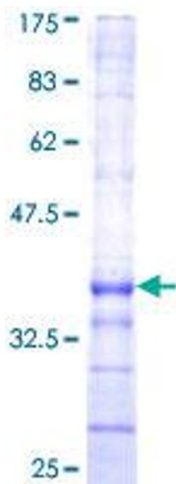
## Application Details

|                    |  |
|--------------------|--|
| Application Notes: | Optimal working dilution should be determined by the investigator.   |
| Comment:           | Preparation method: in vitro, wheat germ expression system<br>Product Quality tested by: 12.5% SDS-PAGE Stained with Coomassie Blue. |
| Restrictions:      | For Research Use only  |

## Handling

|                  |   |
|------------------|---|
| Buffer:          | 50 mM Tris-HCl, 10 mM reduced Glutathione, pH =8.0 in the elution buffer. |
| Handling Advice: | Aliquot to avoid repeated freezing and thawing.                           |
| Storage:         | -80 °C  |
| Storage Comment: | Best use within three months from the date of receipt of this protein.    |

## Images



**Image 1.**