



[Go to Product page](#)

Datasheet for ABIN1352330

Endothelin-1 Receptor Protein (AA 18-80) (GST tag)

1 Image

Overview

| | |
|-------------------------------|---|
| Quantity: | 10 µg |
| Target: | Endothelin-1 Receptor (EDNRA) |
| Protein Characteristics: | AA 18-80 |
| Origin: | Human |
| Source: | Wheat germ |
| Protein Type: | Recombinant |
| Purification tag / Conjugate: | This Endothelin-1 Receptor protein is labelled with GST tag. |
| Application: | Western Blotting (WB), ELISA, Affinity Purification (AP), Antibody Array (AA) |

Product Details

| | |
|------------------|--|
| Purpose: | EDNRA (Human) Recombinant Protein (Q01) |
| Sequence: | VISDNPERYS TNLSNHVDDF TFRGTELSF LVTTHQPTNL VLPSNGSMHN YCPQQTAKS AFK |
| Characteristics: | Human EDNRA partial ORF (AAH22511, 18 a.a. - 80 a.a.) recombinant protein with GST-tag at N-terminal. |
| Purification: | in vitro wheat germ expression system |

Target Details

| | |
|-------------------|--|
| Target: | Endothelin-1 Receptor (EDNRA) |
| Alternative Name: | EDNRA (EDNRA Products) |
| Background: | Full Gene Name: endothelin receptor type A |

Target Details

Synonyms: ETA,ETRA

Gene ID: 1909

Pathways: [cAMP Metabolic Process](#)

Application Details

Application Notes: Optimal working dilution should be determined by the investigator.

Comment: Preparation method: in vitro, wheat germ expression system
Product Quality tested by: 12.5% SDS-PAGE Stained with Coomassie Blue.

Restrictions: For Research Use only

Handling

Buffer: 50 mM Tris-HCl, 10 mM reduced Glutathione, pH =8.0 in the elution buffer.

Handling Advice: Aliquot to avoid repeated freezing and thawing.

Storage: -80 °C

Storage Comment: Best use within three months from the date of receipt of this protein.

Images

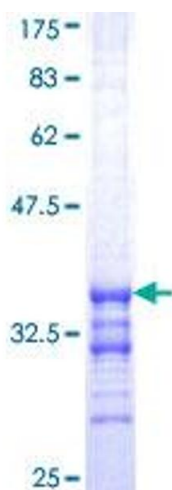


Image 1.