

Datasheet for ABIN1352343
eEF1A1 Protein (AA 156-255) (GST tag)



[Go to Product page](#)

1 Image

Overview

Quantity:	10 µg
Target:	eEF1A1 (EEF1A1)
Protein Characteristics:	AA 156-255
Origin:	Human
Source:	Wheat germ
Protein Type:	Recombinant
Purification tag / Conjugate:	This eEF1A1 protein is labelled with GST tag.
Application:	ELISA, Western Blotting (WB), Antibody Array (AA), Affinity Purification (AP)

Product Details

Purpose:	EEF1A1 (Human) Recombinant Protein (Q01)
Sequence:	DSTEPYSQK RYEEIVKEVS TYIKKIGYNP DTVAFVPISG WNGDNMLEPS ANMPWFKGWK VTRKDGNASG TTLLEALDCI LPPTTRPTDKP LRLPLQDVYK
Characteristics:	Human EEF1A1 partial ORF (AAH09875, 156 a.a. - 255 a.a.) recombinant protein with GST-tag at N-terminal.
Purification:	in vitro wheat germ expression system

Target Details

Target:	eEF1A1 (EEF1A1)
Alternative Name:	EEF1A1 (EEF1A1 Products)

Target Details

Background: Gene: eukaryotic translation elongation factor 1 alpha 1
Synonyms: CCS-3, CCS3, EEF-1, EEF1A, EF-Tu, EF1A, FLJ25721, GRAF-1EF, HNGC:16303, LENG7, MGC102687, MGC131894, MGC16224, PTI1, eEF1A-1

Gene ID: 1915

Application Details

Application Notes: Optimal working dilution should be determined by the investigator.

Restrictions: For Research Use only

Handling

Buffer: 50 mM Tris-HCl, 10 mM reduced Glutathione, pH =8.0 in the elution buffer.

Handling Advice: Aliquot to avoid repeated freezing and thawing.

Storage: -80 °C

Storage Comment: Best use within three months from the date of receipt of this protein.

Images

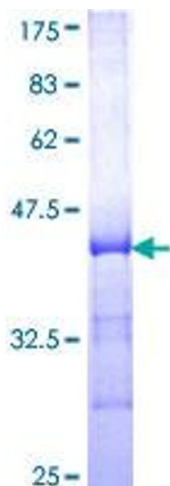


Image 1.