



[Go to Product page](#)

Datasheet for ABIN1352345

EEF1A2 Protein (AA 1-463) (GST tag)

1 Image

Overview

Quantity:	10 µg
Target:	EEF1A2
Protein Characteristics:	AA 1-463
Origin:	Human
Source:	Wheat germ
Protein Type:	Recombinant
Purification tag / Conjugate:	This EEF1A2 protein is labelled with GST tag.
Application:	Western Blotting (WB), ELISA, Antibody Array (AA), Affinity Purification (AP)

Product Details

Purpose:	EEF1A2 (Human) Recombinant Protein (P01)
Sequence:	MGKEKTHINI VVIGHVDSGK STTTGHLIYK CGGIDKRTIE KFEKEAAEMG KGSFKYAWVL DKLKAERERG ITIDISLWKF ETTKYIITII DAPGHRDFIK NMITGTSQAD CAVLIVAAGV GEFEAGISKN GQTRHALLA YTLGVKQLIV GVNKMDSTEP AYSEKRYDEI VKEVSAYIKK IGYNPATVPF VPISGWHGDN MLEPSPNMPW FKGWKVERKE GNASGVSLLE ALDTILPPTR PTDKPLRLPL QDVYKIGGIG TVPVGRVETG ILRPGMVVTF APVNITTEVK SVEMHHEALS EALPGDENVGF NVKNVSVKDI RRGNVCGDSK SDPPQEAQF TSQVIILNHP GQISAGYSPV IDCHTAHIAC KFAELKEKID RRSKGLLEDN PKSLKSGDAA IVMVPGKPM CVESFSQYPP LGRFAVRDMR QTVAVGVIKN VEKKS GGAGK VTKSAQKAQK AGK
Characteristics:	Human EEF1A2 full-length ORF (NP_001949.1, 1 a.a. - 463 a.a.) recombinant protein with GST-tag at N-terminal.

Product Details

Purification: in vitro wheat germ expression system

Target Details

Target: EEF1A2

Alternative Name: EEF1A2 ([EEF1A2 Products](#))

Background: Full Gene Name: eukaryotic translation elongation factor 1 alpha 2
Synonyms: EEF1AL,EF-1-alpha-2,EF1A,FLJ41696,HS1,STN,STNL

Gene ID: 1917

NCBI Accession: [NM_001958](#)

Application Details

Application Notes: Optimal working dilution should be determined by the investigator.

Comment: Preparation method: in vitro, wheat germ expression system
Product Quality tested by: 12.5% SDS-PAGE Stained with Coomassie Blue.

Restrictions: For Research Use only

Handling

Buffer: 50 mM Tris-HCl, 10 mM reduced Glutathione, pH =8.0 in the elution buffer.

Handling Advice: Aliquot to avoid repeated freezing and thawing.

Storage: -80 °C

Storage Comment: Best use within three months from the date of receipt of this protein.

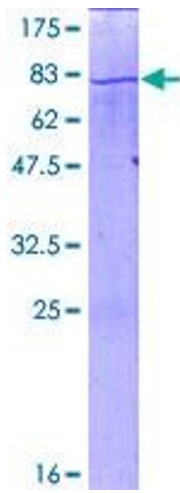


Image 1.