

Datasheet for ABIN1352347

EEF1A2 Protein (AA 364-462) (GST tag)



[Go to Product page](#)

1 Image

Overview

Quantity:	10 µg
Target:	EEF1A2
Protein Characteristics:	AA 364-462
Origin:	Human
Source:	Wheat germ
Protein Type:	Recombinant
Purification tag / Conjugate:	This EEF1A2 protein is labelled with GST tag.
Application:	Western Blotting (WB), ELISA, Antibody Array (AA), Affinity Purification (AP)

Product Details

Purpose:	EEF1A2 (Human) Recombinant Protein (Q01)
Sequence:	HTAHIACKFA ELKEKIDRRS GKKLEDNPKS LKSGDAAIVE MVPGKPMCVE SFSQYPPLGR FAVRDMRQTV AVGVKNVEK KSGGAGKVTK SAQKAQKAG
Characteristics:	Human EEF1A2 partial ORF (NP_001949, 364 a.a. - 462 a.a.) recombinant protein with GST-tag at N-terminal.
Purification:	in vitro wheat germ expression system

Target Details

Target:	EEF1A2
Alternative Name:	EEF1A2 (EEF1A2 Products)

Target Details

Background:	Full Gene Name: eukaryotic translation elongation factor 1 alpha 2 Synonyms: EEF1AL,EF-1-alpha-2,EF1A,FLJ41696,HS1,STN,STNL
Gene ID:	1917
NCBI Accession:	NM_001958

Application Details

Application Notes:	Optimal working dilution should be determined by the investigator.
Comment:	Preparation method: in vitro, wheat germ expression system Product Quality tested by: 12.5% SDS-PAGE Stained with Coomassie Blue.
Restrictions:	For Research Use only

Handling

Buffer:	50 mM Tris-HCl, 10 mM reduced Glutathione, pH =8.0 in the elution buffer.
Handling Advice:	Aliquot to avoid repeated freezing and thawing.
Storage:	-80 °C
Storage Comment:	Best use within three months from the date of receipt of this protein.

Images

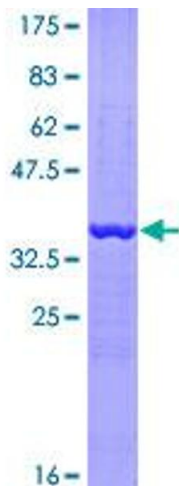


Image 1.