

Datasheet for ABIN135236
anti-CD45RB antibody (PE)[Go to Product page](#)

2 Images

Overview

Quantity:	0.1 mg
Target:	CD45RB
Reactivity:	Mouse
Host:	Rat
Clonality:	Monoclonal
Conjugate:	This CD45RB antibody is conjugated to PE
Application:	Flow Cytometry (FACS)

Product Details

Immunogen:	Cloned mouse Th cell line
Clone:	C363-16A
Isotype:	IgG2a
Specificity:	Mouse CD45RB, Mr 200-240 kDa
Characteristics:	Rat Anti-Mouse CD45RB-PE

Target Details

Target:	CD45RB
Alternative Name:	CD45RB (CD45RB Products)
Background:	CD45RB represents an exon B-dependent form of CD45 glycoprotein. It is expressed at high density on peripheral B cells, the suppressor/cytotoxic subpopulation of T lymphocytes, a

Target Details

subset of helper T cells, most thymocytes and at low density on macrophages and dendritic cells.

Application Details

Application Notes:

- **Applications:** FC - Quality tested , Sep - Reported in literature
- **Working Dilutions:** Flow Cytometry FITC and BIOT conjugates 1 g/106 cells PE, SPRD, and AF647 conjugates 0.2 g/106 cells For flow cytometry, the suggested use of these reagents is in a final volume of 100 L

Sample Volume: 1 mL

Restrictions: For Research Use only

Handling

Concentration: 0.1 mg/mL

Buffer: 0.1 mg in 1.0 mL of PBS/Sodium azide and a stabilizing agent

Preservative: Sodium azide

Precaution of Use: This product contains Sodium azide: a POISONOUS AND HAZARDOUS SUBSTANCE which should be handled by trained staff only.

Handling Advice:

Do not freeze!

Protect conjugated products from light.

Each reagent is stable for the period shown on the bottle label if stored as directed.

Storage: 4 °C

Storage Comment: Store at 2-8°C

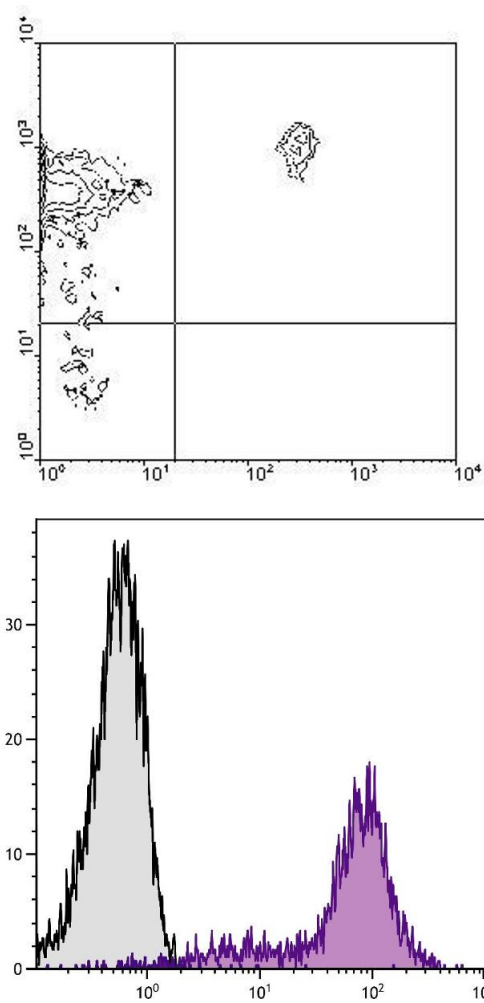


Image 1.

Flow Cytometry

Image 2. BALB/c mouse splenocytes were stained with Rat Anti-Mouse CD45RB-PE.