



[Go to Product page](#)

Datasheet for ABIN1352368

## EEPD1 Protein (AA 1-569) (GST tag)

### 1 Image

#### Overview

Quantity:	25 µg
Target:	EEPD1
Protein Characteristics:	AA 1-569
Origin:	Human
Source:	Wheat germ
Protein Type:	Recombinant
Purification tag / Conjugate:	This EEPD1 protein is labelled with GST tag.
Application:	ELISA, Western Blotting (WB), Antibody Array (AA), Affinity Purification (AP)

#### Product Details

Purpose:	EEPD1 (Human) Recombinant Protein (P01)
Sequence:	MGSTLGCHRS IPRDPSDL SH SRKFSAACNF SNILVNQERL NINTATEEEL MTLPGVTRAV ARSIVEYREY IGGFKKVEDL ALVSGVGATK LEQVKFEICV SSKGSSAQHS PSSLRDLLA EQQPHHLATA VPLTPRVNIN TATPAQLMSV RGLSEKMALS IVDFRREHGP FRSVEDLVRM DGINAAFLDR IRHQVFAERS RPPSTHTNGG LTFTAKPHPS PTSLSLQSED LDLPPGGPTQ IISTRPSVEA FGGTRDGRPV LRLATWNLQG CSVEKANNPG VREVVCMTLL ENSIKLLAVQ ELLDREALEK FCTELNQPTL PNIRKWKGPR GCWKAVVAEK PSNQLQKGAG YAGFLWDAAA GMELRDAGSQ ESSPSNGHGK LAGPSPYLGR FKVGS HDLTL VNLHLAALTL LGSENPSKNH SDGHRLASFA QTLQETLKGE KDVIILGDFG QGPDSNDYDI LRKEKFHHLI PAHTFTNIST KNPQGSKSLD NIWISKSLKK VFTGHWAVVR EGLTNPWIPD NWSWGGVASE HCPVLAEFYT EKDWSKKDAP RNGSGVALER SEANIKHER
Characteristics:	Human EEPD1 full-length ORF ( AAH65518.1, 1 a.a. - 569 a.a.) recombinant protein with GST-

## Product Details

---

tag at N-terminal.

Purification: in vitro wheat germ expression system

## Target Details

---

Target: EEPD1

Alternative Name: EEPD1 ([EEPD1 Products](#))

Background: Full Gene Name: endonuclease/exonuclease/phosphatase family domain containing 1  
Synonyms: HSPC107,KIAA1706

Gene ID: 80820

## Application Details

---

Application Notes: Optimal working dilution should be determined by the investigator.

Comment: Preparation method: in vitro, wheat germ expression system  
Product Quality tested by: 12.5% SDS-PAGE Stained with Coomassie Blue.

Restrictions: For Research Use only

## Handling

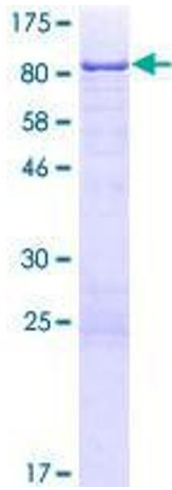
---

Buffer: 50 mM Tris-HCl, 10 mM reduced Glutathione, pH =8.0 in the elution buffer.

Handling Advice: Aliquot to avoid repeated freezing and thawing.

Storage: -80 °C

Storage Comment: Best use within three months from the date of receipt of this protein.



**Image 1.**