

## Datasheet for ABIN135237

**anti-CD45RC antibody**[Go to Product page](#)

## 1 Image

## Overview

Quantity:	0.5 mg
Target:	CD45RC
Reactivity:	Mouse
Host:	Rat
Clonality:	Monoclonal
Conjugate:	This CD45RC antibody is un-conjugated
Application:	Flow Cytometry (FACS)

## Product Details

Immunogen:	Activated DBA/2 B cells
Clone:	GL24
Isotype:	IgM
Specificity:	Mouse CD45RC, Mr 200-240 kDa
Characteristics:	Rat Anti-Mouse CD45RC-UNLB
Purification:	Purified

## Target Details

Target:	CD45RC
Alternative Name:	CD45RC ( <a href="#">CD45RC Products</a> )
Background:	CD45RB represents an exon B-dependent form of CD45 glycoprotein. It is expressed at high

## Target Details

density on peripheral B cells, the suppressor/cytotoxic subpopulation of T lymphocytes, a subset of helper T cells, most thymocytes and at low density on macrophages and dendritic cells.

## Application Details

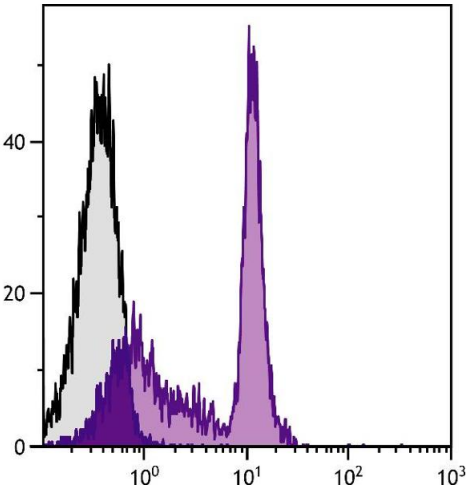
Application Notes:	<ul style="list-style-type: none"><li>• <b>Applications:</b> FC - Quality tested , IP - Reported in literature</li><li>• <b>Working Dilutions:</b> Flow Cytometry FLMA and BIOT conjugates 1 g/106 cells PE conjugate 0.2 g/106 cells For flow cytometry, the suggested use of these reagents is in a final volume of 100 L</li></ul>
--------------------	---

Sample Volume:	1 mL
Restrictions:	For Research Use only

## Handling

Concentration:	0.5 mg/mL
Buffer:	0.5 mg of purified immunoglobulin in 1.0 mL of borate buffered saline, pH 8.2. No preservatives or amine-containing buffer salts added
Preservative:	Without preservative
Handling Advice:	Each reagent is stable for the period shown on the bottle label if stored as directed.
Storage:	4 °C
Storage Comment:	Store at 2-8°C

## Images



### Flow Cytometry

**Image 1.** BALB/c mouse splenocytes were stained with Rat Anti-Mouse CD45RC-UNLB.