



[Go to Product page](#)

Datasheet for ABIN1352371

EFCAB2 Protein (AA 1-162) (GST tag)

1 Image

Overview

| | |
|-------------------------------|---|
| Quantity: | 10 µg |
| Target: | EFCAB2 |
| Protein Characteristics: | AA 1-162 |
| Origin: | Human |
| Source: | Wheat germ |
| Protein Type: | Recombinant |
| Purification tag / Conjugate: | This EFCAB2 protein is labelled with GST tag. |
| Application: | ELISA, Western Blotting (WB), Antibody Array (AA), Affinity Purification (AP) |

Product Details

| | |
|------------------|--|
| Purpose: | EFCAB2 (Human) Recombinant Protein (P01) |
| Sequence: | MADEKDREEI IVAEFHKKIK EAFEVFDHES NNTVDVREIG TIIRSLGCCP TEGELHDLIA EVEEEEPTGY IRFEKFLPVM TEILLERKYR PIPEDVLLRA FEVLDSAKRG FLTKDELIKY MTEEGEPFSQ EEMEEMLSAA IDPESNSINY KDYITMMVID EN |
| Characteristics: | Human EFCAB2 full-length ORF (NP_115704.1, 1 a.a. - 162 a.a.) recombinant protein with GST-tag at N-terminal. |
| Purification: | in vitro wheat germ expression system |

Target Details

| | |
|-------------------|--|
| Target: | EFCAB2 |
| Alternative Name: | EFCAB2 (EFCAB2 Products) |

Target Details

Background: Full Gene Name: EF-hand calcium binding domain 2
Synonyms: FLJ33608,MGC12458

Gene ID: 84288

NCBI Accession: [NM_032328](#)

Application Details

Application Notes: Optimal working dilution should be determined by the investigator.

Comment: Preparation method: in vitro, wheat germ expression system
Product Quality tested by: 12.5% SDS-PAGE Stained with Coomassie Blue.

Restrictions: For Research Use only

Handling

Buffer: 50 mM Tris-HCl, 10 mM reduced Glutathione, pH =8.0 in the elution buffer.

Handling Advice: Aliquot to avoid repeated freezing and thawing.

Storage: -80 °C

Storage Comment: Best use within three months from the date of receipt of this protein.

Images

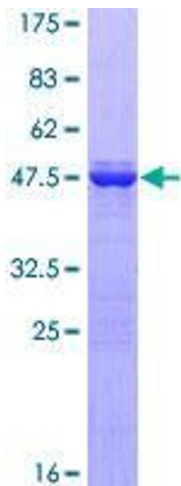


Image 1.