



[Go to Product page](#)

Datasheet for ABIN1352382

EFHA2 Protein (AA 1-530) (GST tag)

1 Image

Overview

Quantity:	25 µg
Target:	EFHA2 (MICU3)
Protein Characteristics:	AA 1-530
Origin:	Human
Source:	Wheat germ
Protein Type:	Recombinant
Purification tag / Conjugate:	This EFHA2 protein is labelled with GST tag.
Application:	ELISA, Western Blotting (WB), Antibody Array (AA), Affinity Purification (AP)

Product Details

Purpose:	EFHA2 (Human) Recombinant Protein (P01)
Sequence:	MAALRRLWP PPRVSPPLCA HQPLLGPWGR PAVTTLGLPG RPFSSREDEE RAVAEAAWRR RRRWGELSVA AAAGGGLVGL VCYQLYGDPR AGSPATGRPS KSAATEPEDP PRGRGMLPIP VAAAKETVAI GRTDIEDLDL YATSRERRFR LFASIECEGQ LFMTPTYDFIL AVTTDPEKVA KTKWKSLSKQE LNQMLAETPP VWKGGSKLFR NLKEKGVISY TEYLFLLCIL TKPHAGFRIA FNMFDTDGNE MVDKKEFLVL QEIFRKKNEK REIKGDEEKR AMLRLQLYGY HSPTNSVLKT DAEELVRSYS WDTLRRNTSQ ALFSDLAERA DDITSLVTD TLLVHFFGKK GKAELNFEDF YRFMDNLQTE VLEIEFLSYS NGMNTISEED FAHILLRYTN VENTSVFLEN VRYSIPEEK ITFDEFRSFF QFLNNLEDA IALNMYNFAS RSIGQDEFKR AVYVATGLKF SPHLVNTVFK IFDVDDKDDL SYKEFIGIMK DRLHRGFRGY KTVQKYPTFK SCLKKELHSR
Characteristics:	Human EFHA2 full-length ORF (NP_859074.1, 1 a.a. - 530 a.a.) recombinant protein with GST-tag at N-terminal.

Product Details

Purification: in vitro wheat germ expression system

Target Details

Target: EFHA2 (MICU3)

Alternative Name: EFHA2 ([MICU3 Products](#))

Background: Full Gene Name: EF-hand domain family, member A2
Synonyms: DKFZp313A0139

Gene ID: 286097

NCBI Accession: [NM_181723](#)

Application Details

Application Notes: Optimal working dilution should be determined by the investigator.

Comment: Preparation method: in vitro, wheat germ expression system
Product Quality tested by: 12.5% SDS-PAGE Stained with Coomassie Blue.

Restrictions: For Research Use only

Handling

Buffer: 50 mM Tris-HCl, 10 mM reduced Glutathione, pH =8.0 in the elution buffer.

Handling Advice: Aliquot to avoid repeated freezing and thawing.

Storage: -80 °C

Storage Comment: Best use within three months from the date of receipt of this protein.

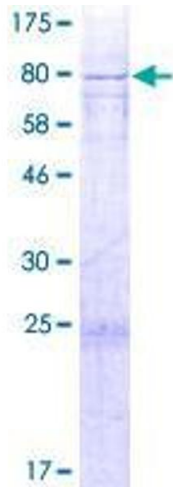


Image 1.