

Datasheet for ABIN1352399

Ephrin A2 Protein (EFNA2) (AA 1-213) (GST tag)



[Go to Product page](#)

1 Image

Overview

Quantity:	10 µg
Target:	Ephrin A2 (EFNA2)
Protein Characteristics:	AA 1-213
Origin:	Human
Source:	Wheat germ
Protein Type:	Recombinant
Purification tag / Conjugate:	This Ephrin A2 protein is labelled with GST tag.
Application:	Western Blotting (WB), ELISA, Antibody Array (AA), Affinity Purification (AP)

Product Details

Purpose:	EFNA2 (Human) Recombinant Protein (P01)
Sequence:	MAPAQRPLLP LLLLLLPLPP PPFARAEDAA RANSDRYAVY WNRSNPRFHA GAGDDGGGYT VEVSINDYLD IYCPHYGAPL PPAERMEHYV LYMVNGEGHA SCDHRQRGFK RWECNRPAAP GGPLKFSEKF QLFTPFSLGF EFRPGHEYYY ISATPPNAVD RPCLRLKVVV RPTNETLYEA PEPIFTSNNS CSSPGGCRLF LSTIPVLWTL LGS
Characteristics:	Human EFNA2 full-length ORF (AAI48728.1, 1 a.a. - 213 a.a.) recombinant protein with GST-tag at N-terminal.
Purification:	in vitro wheat germ expression system

Target Details

Target:	Ephrin A2 (EFNA2)
---------	-------------------

Target Details

Alternative Name:	EFNA2 (EFNA2 Products)
Background:	Full Gene Name: ephrin-A2 Synonyms: ELF-1,EPLG6,HEK7-L,LERK6
Gene ID:	1943

Application Details

Application Notes:	Optimal working dilution should be determined by the investigator.
Comment:	Preparation method: in vitro, wheat germ expression system Product Quality tested by: 12.5% SDS-PAGE Stained with Coomassie Blue.
Restrictions:	For Research Use only

Handling

Buffer:	50 mM Tris-HCl, 10 mM reduced Glutathione, pH =8.0 in the elution buffer.
Handling Advice:	Aliquot to avoid repeated freezing and thawing.
Storage:	-80 °C
Storage Comment:	Best use within three months from the date of receipt of this protein.

Images

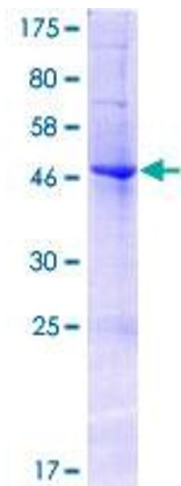


Image 1.