

Datasheet for ABIN1352433  
**EGFLAM Protein (AA 1-152) (GST tag)**



[Go to Product page](#)

1 Image

## Overview

Quantity:	10 µg
Target:	EGFLAM
Protein Characteristics:	AA 1-152
Origin:	Human
Source:	Wheat germ
Protein Type:	Recombinant
Purification tag / Conjugate:	This EGFLAM protein is labelled with GST tag.
Application:	ELISA, Western Blotting (WB), Antibody Array (AA), Affinity Purification (AP)

## Product Details

Purpose:	FLJ39155 (Human) Recombinant Protein (P01)
Sequence:	MRFKTTAKDG LLLWRGDSPM RPNSDFISLG LRDGALVFSY NLGSGVASIM VNGSFNDGRW HRVKAVRDGQ SGKITVDDYG ARTGKSPGMM RQLNINGALY VGGMKEIALH TNRQYMRGLV GCISHFTLST DYHISLVEDA VDGKNINTCG AK
Characteristics:	Human FLJ39155 full-length ORF ( NP_877953.1, 1 a.a. - 152 a.a.) recombinant protein with GST-tag at N-terminal.
Purification:	in vitro wheat germ expression system

## Target Details

Target:	EGFLAM
Alternative Name:	EGFLAM ( <a href="#">EGFLAM Products</a> )

## Target Details

---

Background:	Full Gene Name: EGF-like, fibronectin type III and laminin G domains Synonyms: AGRINL,AGRNL,FLJ39155
Gene ID:	133584
NCBI Accession:	<a href="#">NM_182801</a>
Pathways:	<a href="#">Glycosaminoglycan Metabolic Process</a>

## Application Details

---

Application Notes:	Optimal working dilution should be determined by the investigator.
Comment:	Preparation method: in vitro, wheat germ expression system Product Quality tested by: 12.5% SDS-PAGE Stained with Coomassie Blue.
Restrictions:	For Research Use only

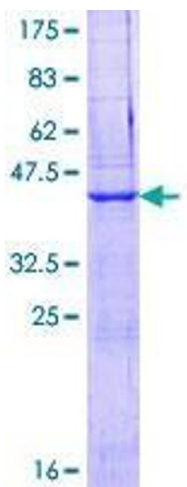
## Handling

---

Buffer:	50 mM Tris-HCl, 10 mM reduced Glutathione, pH =8.0 in the elution buffer.
Handling Advice:	Aliquot to avoid repeated freezing and thawing.
Storage:	-80 °C
Storage Comment:	Best use within three months from the date of receipt of this protein.

## Images

---



**Image 1.**