

Datasheet for ABIN1352441
EGFR Protein (AA 669-1210) (GST tag)



[Go to Product page](#)

1 Image

Overview

Quantity:	10 µg
Target:	EGFR
Protein Characteristics:	AA 669-1210
Origin:	Human
Source:	Wheat germ
Protein Type:	Recombinant
Purification tag / Conjugate:	This EGFR protein is labelled with GST tag.
Application:	Western Blotting (WB), ELISA, Antibody Array (AA), Affinity Purification (AP)

Product Details

Purpose:	EGFR (Human) Recombinant Protein (Q03)
Sequence:	RRRHIVRKRT LRLLQEREL VEPLTPSGEA PNQALLRILK ETEFKKIKVL GSGAFGTVYK GLWIPEGEKV KIPVAIKELR EATSPKANKE ILDEAYVMAS VDNPHVCRLG GICLTSTVQL ITQLMPFGCL LDYVREHKDN IGSQYLLNWC VQIAKGMNYL EDRRLVHRDL AARNVLVKTP QHVKITDFGL AKLLGAEKE YHAEGGKVP KWMALLESILH RIYTHQSDVW SYGVTWELM TFGSKPYDGI PASEISSILE KGERLPQPI CTIDVYMIMV KCWMIDADSR PKFRELIIEF SKMARDPQRY LVIQDGERMH LPSPTDSNFY RALMDEEDMD DVVDADEYLI PQQGFFSSPS TSRTPLLSSL SATSNNSTVA CIDRNLQSC PIKEDSFLQR YSSDPTGALT EDSIDDTFLP VPEYINQSVV KRPAGSVQNP VYHNLPLNPA PSRDPHYQDP HSTAVGNPEY LNTVQPTCVN STFDSPAHWA QKGS HQISLD NPDYQQDFFP KEAKPNGIFK GSTAENAEYL RVAPQSSEFI GA
Characteristics:	Human EGFR partial ORF (NP_005219.2, 669 a.a. - 1210 a.a.) recombinant protein with GST-tag at N-terminal.

Product Details

Purification: in vitro wheat germ expression system

Target Details

Target: EGFR

Alternative Name: EGFR ([EGFR Products](#))

Background: Full Gene Name: epidermal growth factor receptor (erythroblastic leukemia viral (v-erb-b) oncogene homolog, avian)
Synonyms: ERBB,ERBB1,HER1,PIG61,mENA

Gene ID: 1956

NCBI Accession: [NM_005228](#)

Pathways: [NF-kappaB Signaling](#), [RTK Signaling](#), [Fc-epsilon Receptor Signaling Pathway](#), [EGFR Signaling Pathway](#), [Neurotrophin Signaling Pathway](#), [Stem Cell Maintenance](#), [Hepatitis C](#), [Positive Regulation of Response to DNA Damage Stimulus](#), [Interaction of EGFR with phospholipase C-gamma](#), [Thromboxane A2 Receptor Signaling](#), [EGFR Downregulation](#), [S100 Proteins](#)

Application Details

Application Notes: Optimal working dilution should be determined by the investigator.

Comment: Preparation method: in vitro, wheat germ expression system
Product Quality tested by: 12.5% SDS-PAGE Stained with Coomassie Blue

Restrictions: For Research Use only

Handling

Buffer: 50 mM Tris-HCl, 10 mM reduced Glutathione, pH =8.0 in the elution buffer.

Handling Advice: Aliquot to avoid repeated freezing and thawing.

Storage: -80 °C

Storage Comment: Best use within three months from the date of receipt of this protein.

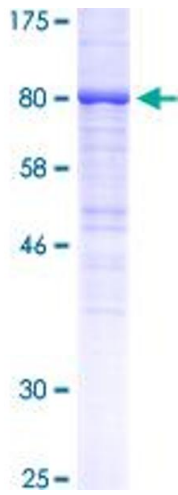


Image 1.