



[Go to Product page](#)

Datasheet for ABIN1352456

## EGR2 Protein (AA 217-293) (GST tag)

### 1 Image

#### Overview

Quantity:	10 µg
Target:	EGR2
Protein Characteristics:	AA 217-293
Origin:	Human
Source:	Wheat germ
Protein Type:	Recombinant
Purification tag / Conjugate:	This EGR2 protein is labelled with GST tag.
Application:	Western Blotting (WB), ELISA, Antibody Array (AA), Affinity Purification (AP)

#### Product Details

Purpose:	EGR2 (Human) Recombinant Protein (Q01)
Sequence:	PGLFPMIPDY PGFFPSQCQR DLHGTTAGPDR KPFPCPLDTL RVPPPLTPLS TIRNFTLGGP SAGVTGPGAS GGSEGPR
Characteristics:	Human EGR2 partial ORF ( NP_000390.2, 217 a.a. - 293 a.a.) recombinant protein with GST-tag at N-terminal.
Purification:	in vitro wheat germ expression system

#### Target Details

Target:	EGR2
Alternative Name:	EGR2 ( <a href="#">EGR2 Products</a> )

## Target Details

Background:	Full Gene Name: early growth response 2 (Krox-20 homolog, Drosophila) Synonyms: AT591,CMT1D,CMT4E,DKFZp686J1957,FLJ14547,KROX20
Gene ID:	1959
NCBI Accession:	<a href="#">NM_000399</a>

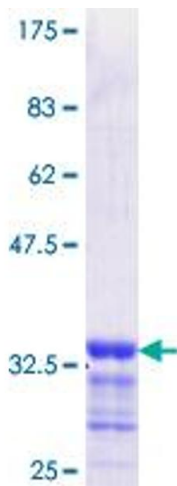
## Application Details

Application Notes:	Optimal working dilution should be determined by the investigator.
Comment:	Preparation method: in vitro, wheat germ expression system Product Quality tested by: 12.5% SDS-PAGE Stained with Coomassie Blue.
Restrictions:	For Research Use only

## Handling

Buffer:	50 mM Tris-HCl, 10 mM reduced Glutathione, pH =8.0 in the elution buffer.
Handling Advice:	Aliquot to avoid repeated freezing and thawing.
Storage:	-80 °C
Storage Comment:	Best use within three months from the date of receipt of this protein.

## Images



**Image 1.**