



[Go to Product page](#)

Datasheet for ABIN1352459

EGR4 Protein (AA 377-486) (GST tag)

1 Image

Overview

Quantity:	10 µg
Target:	EGR4
Protein Characteristics:	AA 377-486
Origin:	Human
Source:	Wheat germ
Protein Type:	Recombinant
Purification tag / Conjugate:	This EGR4 protein is labelled with GST tag.
Application:	Western Blotting (WB), ELISA, Antibody Array (AA), Affinity Purification (AP)

Product Details

Purpose:	EGR4 (Human) Recombinant Protein (Q01)
Sequence:	AKAFACPVES CVRSFARSDE LNRHLRIHTG HKPFQCRICL RNFSRSDHLT THVRHTTGEK PFACDVCGR R FARSDEKKRH SKVHLKQKAR AEERLKGLGF YSLGLSFASL
Characteristics:	Human EGR4 partial ORF (NP_001956.1, 377 a.a. - 486 a.a.) recombinant protein with GST-tag at N-terminal.
Purification:	in vitro wheat germ expression system

Target Details

Target:	EGR4
Alternative Name:	EGR4 (EGR4 Products)

Target Details

Background: Full Gene Name: early growth response 4
Synonyms: NGFI-C,NGFIC,PAT133

Gene ID: 1961

NCBI Accession: [NM_001965](#)

Application Details

Application Notes: Optimal working dilution should be determined by the investigator.

Comment: Preparation method: in vitro, wheat germ expression system
Product Quality tested by: 12.5% SDS-PAGE Stained with Coomassie Blue.

Restrictions: For Research Use only

Handling

Buffer: 50 mM Tris-HCl, 10 mM reduced Glutathione, pH =8.0 in the elution buffer.

Handling Advice: Aliquot to avoid repeated freezing and thawing.

Storage: -80 °C

Storage Comment: Best use within three months from the date of receipt of this protein.

Images

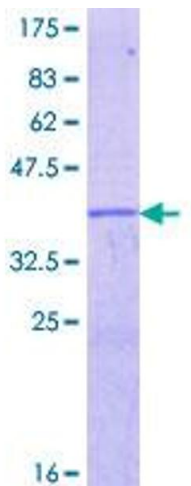


Image 1.