



[Go to Product page](#)

Datasheet for ABIN1352469

## EHF Protein (AA 1-300) (GST tag)

### 1 Image

#### Overview

Quantity:	10 µg
Target:	EHF
Protein Characteristics:	AA 1-300
Origin:	Human
Source:	Wheat germ
Protein Type:	Recombinant
Purification tag / Conjugate:	This EHF protein is labelled with GST tag.
Application:	ELISA, Western Blotting (WB), Antibody Array (AA), Affinity Purification (AP)

#### Product Details

Purpose:	EHF (Human) Recombinant Protein (P01)
Sequence:	MILEGGVMN LNPGNNLLHQ PPAWTDSYST CNVSSGFFGG QWHEIHPQYW TKYQVWEWLQ HLLDTNQLDA NCIPFQEFDI NGEHLCSMSL QEFTRAAGTA GQLLYSNLQH LKWNGQCSSD LFQSTHNVIV KTEQTEPSIM NTWKDENLY DTNYGSTVDL LDSKTFCRAQ ISMTTTSHP VAESPDMMKKE QDPPAKCHTK KHNPRGTHLW EFIRDILLNP DKNPGLIKWE DRSEGVFRFL KSEAVAQLWG KKKNNSSMTY EKLSRAMRY YKREILERV DGRRLVYKFGK NARGWRENEN
Characteristics:	Human EHF full-length ORF ( NP_036285.2, 1 a.a. - 300 a.a.) recombinant protein with GST-tag at N-terminal.
Purification:	in vitro wheat germ expression system

## Target Details

Target:	EHF
Alternative Name:	EHF ( <a href="#">EHF Products</a> )
Background:	Full Gene Name: ets homologous factor Synonyms: ESE3,ESEJ
Gene ID:	26298
NCBI Accession:	<a href="#">NM_012153</a>

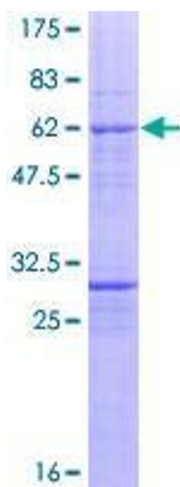
## Application Details

Application Notes:	Optimal working dilution should be determined by the investigator.
Comment:	Preparation method: in vitro, wheat germ expression system Product Quality tested by: 12.5% SDS-PAGE Stained with Coomassie Blue.
Restrictions:	For Research Use only

## Handling

Buffer:	50 mM Tris-HCl, 10 mM reduced Glutathione, pH =8.0 in the elution buffer.
Handling Advice:	Aliquot to avoid repeated freezing and thawing.
Storage:	-80 °C
Storage Comment:	Best use within three months from the date of receipt of this protein.

## Images



**Image 1.**