



[Go to Product page](#)

Datasheet for ABIN1352510

## EIF2B1 Protein (AA 1-305) (GST tag)

### 1 Image

#### Overview

Quantity:	10 µg
Target:	EIF2B1
Protein Characteristics:	AA 1-305
Origin:	Human
Source:	Wheat germ
Protein Type:	Recombinant
Purification tag / Conjugate:	This EIF2B1 protein is labelled with GST tag.
Application:	ELISA, Western Blotting (WB), Antibody Array (AA), Affinity Purification (AP)

#### Product Details

Purpose:	EIF2B1 (Human) Recombinant Protein (P01)
Sequence:	MDDKELIEYF KSQMKEDPDM ASAVAAIRTL LEFLKRDKGE TIQGLRANLT SAIETLCGVD SSVAVSSGGE LFLRFISLAS LEYSDYSKCK KIMIERGELF LRRISLSRNK IADLCHTFIK DGATILTHAY SRVVLRVLEA AVAAKKRFSV YVTESQPDLS GKKMAKALCH LNVPVTVVLD AAVGYIMEKA DLVIVGAEGV VENGGIINKI GTNQMAVCAK AQNKPFYVVA ESFKFVRLFP LNQQDVPDKF KYKADTLKVA QTGQDLKEEH PWVDYTAPSL ITLLFTDLGV LTPSAVSDEL IKLYL
Characteristics:	Human EIF2B1 full-length ORF ( NP_001405.1, 1 a.a. - 305 a.a.) recombinant protein with GST-tag at N-terminal.
Purification:	in vitro wheat germ expression system

## Target Details

Target:	EIF2B1
Alternative Name:	EIF2B1 ( <a href="#">EIF2B1 Products</a> )
Background:	Full Gene Name: eukaryotic translation initiation factor 2B, subunit 1 alpha, 26 kDa Synonyms: EIF-2B,EIF-2Balpha,EIF2B,EIF2BA,MGC117409,MGC125868,MGC125869
Gene ID:	1967
NCBI Accession:	<a href="#">NM_001414</a>
Pathways:	<a href="#">Methionine Biosynthetic Process</a>

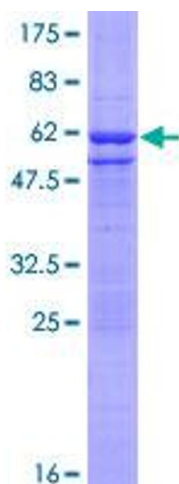
## Application Details

Application Notes:	Optimal working dilution should be determined by the investigator.
Comment:	Preparation method: in vitro, wheat germ expression system Product Quality tested by: 12.5% SDS-PAGE Stained with Coomassie Blue.
Restrictions:	For Research Use only

## Handling

Buffer:	50 mM Tris-HCl, 10 mM reduced Glutathione, pH =8.0 in the elution buffer.
Handling Advice:	Aliquot to avoid repeated freezing and thawing.
Storage:	-80 °C
Storage Comment:	Best use within three months from the date of receipt of this protein.

## Images



**Image 1.**