

Datasheet for ABIN135252
anti-L-Selectin antibody (PE)



[Go to Product page](#)

1 Image

1 Publication

Overview

Quantity:	0.1 mg
Target:	L-Selectin (SELL)
Reactivity:	Mouse
Host:	Rat
Clonality:	Monoclonal
Conjugate:	This L-Selectin antibody is conjugated to PE
Application:	Flow Cytometry (FACS)

Product Details

Immunogen:	C3H/eb cloned mouse B cell lymphoma 38C-13
Clone:	MEL-14
Isotype:	IgG2a
Specificity:	Mouse CD62L, Mr 74 kDa on lymphocytes and Mr 95 kDa on neutrophils
Characteristics:	Rat Anti-Mouse CD62L-PE
Purification:	boric acid precipitation

Target Details

Target:	L-Selectin (SELL)
Alternative Name:	CD62L (SELL Products)
Target Type:	Chemical

Target Details

Background:	CD62L, also known as L-selectin, is a type I transmembrane glycoprotein with lectin-like and Epidermal Growth Factor-like domains. It binds to sialylated oligosaccharide determinants on high endothelial venules (HEV) in peripheral lymph nodes. In the mouse, CD62L is expressed on most thymocytes and on peripheral leukocytes, including B and T lymphocytes, neutrophils, monocytes and eosinophils. This member of the selectin family of cell adhesion molecules appears to be required for lymphocyte homing to peripheral lymph nodes and for leukocyte extravasation at sites of inflammation. Expression of CD62L on lymphocytes and neutrophils is rapidly down-regulated upon cell activation and the level of CD62L expression, along with other markers, distinguishes naive T cells from effector/memory T cells.
-------------	--

Application Details

Application Notes:	<ul style="list-style-type: none">• Applications: FC - Quality tested , IHC-FS - Reported in literature , IP - Reported in literature , Block - Reported in literature , Cyto - Reported in literature• Working Dilutions: Flow Cytometry FITC and BIOT conjugates 2 g/106 cells PACBLU conjugate 0.3 g/106 cells PE, APC, SPRD, PE/CY7, APC/CY7, AF488, AF647, and AF700 0.1 g/106 cells conjugates For flow cytometry, the suggested use of these reagents is in a final volume of 100 L
--------------------	---

Comment:	In vivo and in vitro blocking of adhesion, Cytotoxicity studies
----------	---

Sample Volume:	1 mL
----------------	------

Restrictions:	For Research Use only
---------------	-----------------------

Handling

Concentration:	0.1 mg/mL
----------------	-----------

Buffer:	0.1 mg in 1.0 mL of PBS/Sodium azide and a stabilizing agent
---------	--

Preservative:	Sodium azide
---------------	--------------

Precaution of Use:	This product contains Sodium azide: a POISONOUS AND HAZARDOUS SUBSTANCE which should be handled by trained staff only.
--------------------	--

Handling Advice:	Do not freeze! Protect conjugated products from light. Each reagent is stable for the period shown on the bottle label if stored as directed.
------------------	---

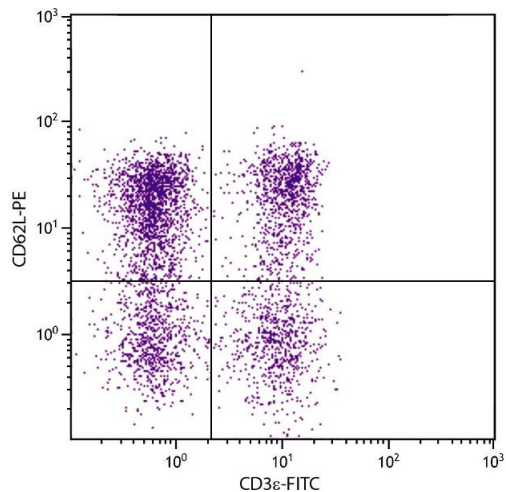
Storage:	4 °C
----------	------

Storage Comment:	Store at 2-8°C
------------------	----------------

Publications

Product cited in: Waaler, Mygland, Tveita, Strand, Solberg, Olsen, Aizenshtadt, Fauskanger, Lund, Brinch, Lycke, Dybing, Nygaard, Bøe, Heintz, Hovig, Hammarström, Corthay, Krauss: "Tankyrase inhibition sensitizes melanoma to PD-1 immune checkpoint blockade in syngeneic mouse models." in: **Communications biology**, Vol. 3, Issue 1, pp. 196, (2020) ([PubMed](#)).

Images



Flow Cytometry

Image 1. BALB/c mouse splenocytes were stained with Rat Anti-Mouse CD62L-PE.