



[Go to Product page](#)

Datasheet for ABIN1352544

## EIF2S2 Protein (AA 1-333) (GST tag)

### 1 Image

#### Overview

Quantity:	10 µg
Target:	EIF2S2
Protein Characteristics:	AA 1-333
Origin:	Human
Source:	Wheat germ
Protein Type:	Recombinant
Purification tag / Conjugate:	This EIF2S2 protein is labelled with GST tag.
Application:	ELISA, Western Blotting (WB), Antibody Array (AA), Affinity Purification (AP)

#### Product Details

Purpose:	EIF2S2 (Human) Recombinant Protein (P01)
Sequence:	MSGDEMIFDP TMSKKKKKKK KPFMLDEEGD TQTEETQPSE TKEVEPEPTE DKDLEADEED TRKKDASDDL DDLNFFNQKK KKKKTKKIFD IDEAEEGVKD LKIESDVQEP TEPEDDLDIM LGNKKKKKKK VKFPDEDEIL EKDEALEDED NKKDDGISFS NQTGPAWAGS ERDYTYEELL NRVFNIMREK NPDMVAGEKR KFVMKPPQVV RVGTKKTSFV NFTDICKLLH RQPKHLLAFL LAELGTSGSI DGNNQLVIKG RFQQQKIENV LRRYIKEYVT CHTCRSPDTI LQKDTRLYFL QCETCHSRCS VASIKTGFQA VTGKRAQLRA KAN
Characteristics:	Human EIF2S2 full-length ORF ( NP_003899.2, 1 a.a. - 333 a.a.) recombinant protein with GST-tag at N-terminal.
Purification:	in vitro wheat germ expression system

## Target Details

Target:	EIF2S2
Alternative Name:	EIF2S2 ( <a href="#">EIF2S2 Products</a> )
Background:	Full Gene Name: eukaryotic translation initiation factor 2, subunit 2 beta, 38 kDa Synonyms: DKFZp686L18198,EIF2,EIF2B,EIF2beta,MGC8508
Gene ID:	8894
NCBI Accession:	<a href="#">NM_003908</a>

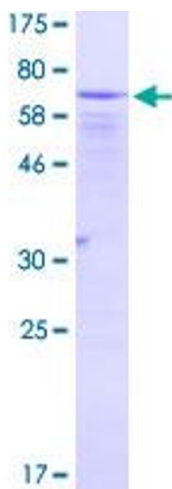
## Application Details

Application Notes:	Optimal working dilution should be determined by the investigator.
Comment:	Preparation method: in vitro, wheat germ expression system Product Quality tested by: 12.5% SDS-PAGE Stained with Coomassie Blue.
Restrictions:	For Research Use only

## Handling

Buffer:	50 mM Tris-HCl, 10 mM reduced Glutathione, pH =8.0 in the elution buffer.
Handling Advice:	Aliquot to avoid repeated freezing and thawing.
Storage:	-80 °C
Storage Comment:	Best use within three months from the date of receipt of this protein.

## Images



**Image 1.**