



[Go to Product page](#)

Datasheet for ABIN1352574

EIF3I Protein (AA 226-325) (GST tag)

1 Image

Overview

Quantity:	10 µg
Target:	EIF3I
Protein Characteristics:	AA 226-325
Origin:	Human
Source:	Wheat germ
Protein Type:	Recombinant
Purification tag / Conjugate:	This EIF3I protein is labelled with GST tag.
Application:	ELISA, Western Blotting (WB), Antibody Array (AA), Affinity Purification (AP)

Product Details

Purpose:	EIF3S2 (Human) Recombinant Protein (Q01)
Sequence:	FRTERPVNSA ALSPNYDHVV LGGGQEAMDV TTTSTRIGKF EARFFHLAFE EEFGRVKGHF GPINSVAFHP DGKSYSSSGGE DGYVRIHYFD PQYFEFEFEA
Characteristics:	Human EIF3S2 partial ORF (NP_003748.1, 226 a.a. - 325 a.a.) recombinant protein with GST-tag at N-terminal.
Purification:	in vitro wheat germ expression system

Target Details

Target:	EIF3I
Alternative Name:	EIF3I (EIF3I Products)

Target Details

Background:	Full Gene Name: eukaryotic translation initiation factor 3, subunit I Synonyms: EIF3S2,PRO2242,TRIP-1,TRIP1,eIF3-beta,eIF3-p36
Gene ID:	8668
NCBI Accession:	NM_003757
Pathways:	Mitotic G1-G1/S Phases , DNA Replication , Ribonucleoprotein Complex Subunit Organization , Synthesis of DNA

Application Details

Application Notes:	Optimal working dilution should be determined by the investigator.
Comment:	Preparation method: in vitro, wheat germ expression system Product Quality tested by: 12.5% SDS-PAGE Stained with Coomassie Blue.
Restrictions:	For Research Use only

Handling

Buffer:	50 mM Tris-HCl, 10 mM reduced Glutathione, pH =8.0 in the elution buffer.
Handling Advice:	Aliquot to avoid repeated freezing and thawing.
Storage:	-80 °C
Storage Comment:	Best use within three months from the date of receipt of this protein.

Images

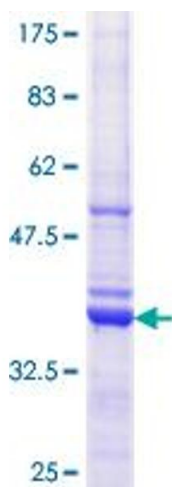


Image 1.