



[Go to Product page](#)

Datasheet for ABIN1352597

EIF4E2 Protein (AA 1-245) (GST tag)

1 Image

Overview

Quantity:	25 µg
Target:	EIF4E2
Protein Characteristics:	AA 1-245
Origin:	Human
Source:	Wheat germ
Protein Type:	Recombinant
Purification tag / Conjugate:	This EIF4E2 protein is labelled with GST tag.
Application:	ELISA, Western Blotting (WB), Antibody Array (AA), Affinity Purification (AP)

Product Details

Purpose:	EIF4E2 (Human) Recombinant Protein (P01)
Sequence:	MNNKFDALKD DDSGDHDQNE ENSTQKDGEK EKTERDKNQS SSKRKAVVPG PAEHPLQYNY TFWYSRRTPG RPTSSQSYEQ NIKQIGTFAS VEQFWRFYSH MVRPGDLTGH SDFHLFKEGI KPMWEDDANK NGGKWIIRLR KGLASRCWEN LILAMLGEQF MVGEEICGAV VSVRFQEDII SIWNKTASDQ ATTARIRDTL RRVLNLPNT IMEYKTHDTS IKMPGRLGPQ RLLFQNLWKP RLNV
Characteristics:	Human EIF4E2 full-length ORF (AAH05874, 1 a.a. - 245 a.a.) recombinant protein with GST-tag at N-terminal.
Purification:	in vitro wheat germ expression system

Target Details

Target:	EIF4E2
---------	--------

Target Details

Alternative Name:	EIF4E2 (EIF4E2 Products)
Background:	Full Gene Name: eukaryotic translation initiation factor 4E family member 2 Synonyms: 4E-LP,4EHP,EIF4EL3,IF4e
Gene ID:	9470
Pathways:	SARS-CoV-2 Protein Interactome

Application Details

Application Notes:	Optimal working dilution should be determined by the investigator.
Comment:	Preparation method: in vitro, wheat germ expression system Product Quality tested by: 12.5% SDS-PAGE Stained with Coomassie Blue.
Restrictions:	For Research Use only

Handling

Buffer:	50 mM Tris-HCl, 10 mM reduced Glutathione, pH =8.0 in the elution buffer.
Handling Advice:	Aliquot to avoid repeated freezing and thawing.
Storage:	-80 °C
Storage Comment:	Best use within three months from the date of receipt of this protein.

Images

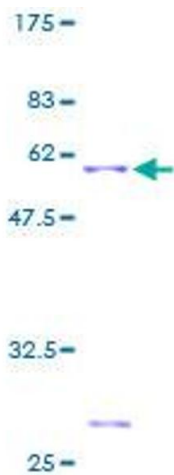


Image 1.