



[Go to Product page](#)

Datasheet for ABIN1352624

EIF4H Protein (AA 1-100) (GST tag)

1 Image

Overview

Quantity:	10 µg
Target:	EIF4H
Protein Characteristics:	AA 1-100
Origin:	Human
Source:	Wheat germ
Protein Type:	Recombinant
Purification tag / Conjugate:	This EIF4H protein is labelled with GST tag.
Application:	Western Blotting (WB), ELISA, Antibody Array (AA), Affinity Purification (AP)

Product Details

Purpose:	WBSCR1 (Human) Recombinant Protein (Q01)
Sequence:	MADFDTYDDR AYSSFGGGRG SRGSAGGHGS RSQKELPTEP PYTAYVGNLP FNTVQGDIDA IFKDLSIRSV RLVRDKDSDK FKGFCYVEFD EVDSLKEALT
Characteristics:	Human WBSCR1 partial ORF (NP_114381.1, 1 a.a. - 100 a.a.) recombinant protein with GST-tag at N-terminal.
Purification:	in vitro wheat germ expression system

Target Details

Target:	EIF4H
Alternative Name:	EIF4H (EIF4H Products)

Target Details

Background:	Full Gene Name: eukaryotic translation initiation factor 4H Synonyms: KIAA0038,WBSCR1,WSCR1
Gene ID:	7458
NCBI Accession:	NM_031992
Pathways:	SARS-CoV-2 Protein Interactome

Application Details

Application Notes:	Optimal working dilution should be determined by the investigator.
Comment:	Preparation method: in vitro, wheat germ expression system Product Quality tested by: 12.5% SDS-PAGE Stained with Coomassie Blue.
Restrictions:	For Research Use only

Handling

Buffer:	50 mM Tris-HCl, 10 mM reduced Glutathione, pH =8.0 in the elution buffer.
Handling Advice:	Aliquot to avoid repeated freezing and thawing.
Storage:	-80 °C
Storage Comment:	Best use within three months from the date of receipt of this protein.

Images

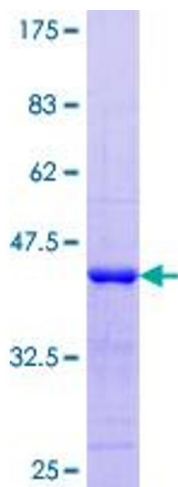


Image 1.