



[Go to Product page](#)

Datasheet for ABIN1352650

## Elastase 3A Protein (ELA3A) (AA 16-270) (GST tag)

### 1 Image

#### Overview

Quantity:	10 µg
Target:	Elastase 3A (ELA3A)
Protein Characteristics:	AA 16-270
Origin:	Human
Source:	Wheat germ
Protein Type:	Recombinant
Purification tag / Conjugate:	This Elastase 3A protein is labelled with GST tag.
Application:	Western Blotting (WB), ELISA, Antibody Array (AA), Affinity Purification (AP)

#### Product Details

Purpose:	ELA3A (Human) Recombinant Protein (P01)
Sequence:	SGYGPPSSHS SSRVHGEDA VPYSWPWQVS LQYEKSGSFY HTC GGSLIAP DWVVTAGHCI SRDLTYQVVL GEYNLAVKEG PEQVIPINSE ELFVHPLWNR SCVACGNDIA LIKLSRSAQL GDAVQLASLP PAGDILPNKT PCYITGWGRL YTNGLPLDKL QQARLPVVDY KHCSRWNWWG STVKKTMVCA GGYIRSGCNG DSGGPLNCPT EDGGWQVHGV TSFVSGFGCN FIWKPTVFTR VSAFIDWIEE TIASH
Characteristics:	Human ELA3A full-length ORF ( AAH07028, 16 a.a. - 270 a.a.) recombinant protein with GST-tag at N-terminal.
Purification:	in vitro wheat germ expression system

## Target Details

Target:	Elastase 3A (ELA3A)
Alternative Name:	ELA3A ( <a href="#">ELA3A Products</a> )
Background:	Full Gene Name: elastase 3A, pancreatic Synonyms: ELA3
Gene ID:	10136

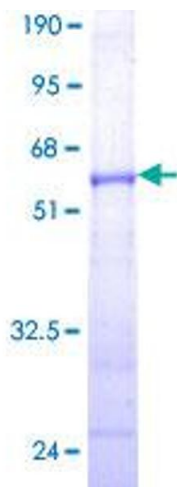
## Application Details

Application Notes:	Optimal working dilution should be determined by the investigator.
Comment:	Preparation method: in vitro, wheat germ expression system Product Quality tested by: 12.5% SDS-PAGE Stained with Coomassie Blue.
Restrictions:	For Research Use only

## Handling

Buffer:	50 mM Tris-HCl, 10 mM reduced Glutathione, pH =8.0 in the elution buffer.
Handling Advice:	Aliquot to avoid repeated freezing and thawing.
Storage:	-80 °C
Storage Comment:	Best use within three months from the date of receipt of this protein.

## Images



**Image 1.**