



[Go to Product page](#)

Datasheet for ABIN1352682

## ELF3 Protein (AA 1-371) (GST tag)

### 1 Image

#### Overview

Quantity:	10 µg
Target:	ELF3
Protein Characteristics:	AA 1-371
Origin:	Human
Source:	Wheat germ
Protein Type:	Recombinant
Purification tag / Conjugate:	This ELF3 protein is labelled with GST tag.
Application:	ELISA, Western Blotting (WB), Antibody Array (AA), Affinity Purification (AP)

#### Product Details

Purpose:	ELF3 (Human) Recombinant Protein (P01)
Sequence:	MAATCEISNI FSNYFSAMYS SEDSTLASVP PAATFGADDL VLTLNPNQMS LEGTEKASWL GEQPQFWSKT QVLDWISYQV EKNKYDASAI DFSRCDMDGA TLCNCALEEL RLVFGPLGDQ LHAQLRDLTS SSSDELSWII ELLEKDGMAF QEALDPGPPFD QGSPFAQELL DDGQQASPYH PGSCGAGAPS PGSSDVSTAG TGASRSSHSS DSGGSDVDLD PTDGKLFPSD GFRDCKKGDP KHGKRKRGRP RKLSKEYWDC LEGKSKHAP RGTHLWEFIR DILIHPELNE GLMKWENRHE GVFKFLRSEA VAQLWGQKKK NSNMTYEKLS RAMRYYYKRE ILERVDGRRRL VYKFGKNSSG WKEEEVLQSR N
Characteristics:	Human ELF3 full-length ORF ( AAH03569.1, 1 a.a. - 371 a.a.) recombinant protein with GST-tag at N-terminal.
Purification:	in vitro wheat germ expression system

## Target Details

Target:	ELF3
Alternative Name:	ELF3 ( <a href="#">ELF3 Products</a> )
Background:	Full Gene Name: E74-like factor 3 (ets domain transcription factor, epithelial-specific ) Synonyms: EPR-1,ERT,ESE-1,ESX
Gene ID:	1999

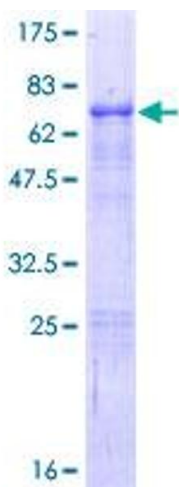
## Application Details

Application Notes:	Optimal working dilution should be determined by the investigator.
Comment:	Preparation method: in vitro, wheat germ expression system Product Quality tested by: 12.5% SDS-PAGE Stained with Coomassie Blue.
Restrictions:	For Research Use only

## Handling

Buffer:	50 mM Tris-HCl, 10 mM reduced Glutathione, pH =8.0 in the elution buffer.
Handling Advice:	Aliquot to avoid repeated freezing and thawing.
Storage:	-80 °C
Storage Comment:	Best use within three months from the date of receipt of this protein.

## Images



**Image 1.**