



[Go to Product page](#)

Datasheet for ABIN1352686

Elf4 Protein (AA 521-612) (GST tag)

1 Image

Overview

Quantity:	10 µg
Target:	Elf4
Protein Characteristics:	AA 521-612
Origin:	Human
Source:	Wheat germ
Protein Type:	Recombinant
Purification tag / Conjugate:	This Elf4 protein is labelled with GST tag.
Application:	ELISA, Western Blotting (WB), Antibody Array (AA), Affinity Purification (AP)

Product Details

Purpose:	ELF4 (Human) Recombinant Protein (Q01)
Sequence:	IAAFIRTSQT TAAPRVKEGP LRSSSYVQGM VTGAPMEGLL VPEETLRELL RDQAHLQPLP TQVVSRGSHN PSLGNTLS PPSRPTVGLT PV
Characteristics:	Human ELF4 partial ORF (NP_001412, 521 a.a. - 612 a.a.) recombinant protein with GST-tag at N-terminal.
Purification:	in vitro wheat germ expression system

Target Details

Target:	Elf4
Alternative Name:	ELF4 (Elf4 Products)

Target Details

Background:	Full Gene Name: E74-like factor 4 (ets domain transcription factor) Synonyms: ELFR,MEF
Gene ID:	2000
NCBI Accession:	NM_001421
Pathways:	Positive Regulation of Endopeptidase Activity

Application Details

Application Notes:	Optimal working dilution should be determined by the investigator.
Comment:	Preparation method: in vitro, wheat germ expression system Product Quality tested by: 12.5% SDS-PAGE Stained with Coomassie Blue.
Restrictions:	For Research Use only

Handling

Buffer:	50 mM Tris-HCl, 10 mM reduced Glutathione, pH =8.0 in the elution buffer.
Handling Advice:	Aliquot to avoid repeated freezing and thawing.
Storage:	-80 °C
Storage Comment:	Best use within three months from the date of receipt of this protein.

Images

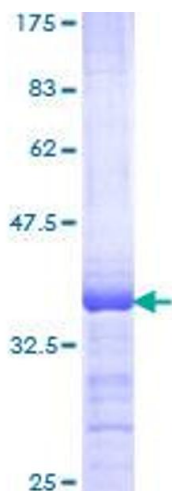


Image 1.