



[Go to Product page](#)

Datasheet for ABIN1352710

## ELMO2 Protein (AA 1-632) (GST tag)

### 1 Image

#### Overview

Quantity:	10 µg
Target:	ELMO2
Protein Characteristics:	AA 1-632
Origin:	Human
Source:	Wheat germ
Protein Type:	Recombinant
Purification tag / Conjugate:	This ELMO2 protein is labelled with GST tag.
Application:	Western Blotting (WB), ELISA, Antibody Array (AA), Affinity Purification (AP)

#### Product Details

Purpose:	ELMO2 (Human) Recombinant Protein (P01)
Sequence:	MERTQSSNME TRLDAMKELA KLSADVTFAT EFINMDGIIV LTRLVESGTK LLSHYSEMLA FTLTAFLELM DHGIVSWDMV SITFIKQIAG YVSQPMVDVS ILQRSLAILE SMVLNSQSLY QKIAEEITVG QLISHLQVSN QEIQTYAIAL INALFLKAPE DKRQDMANAF AQKHLRSIIL NHVIRGNRPI KTEMAHQLYV LQVLTFNLE ERMMTKMDPN DQAQRDIIFE LRRIAFDAES DPSNAPGSGT EKRKAMYTKD YKMLGFTNHI NPAMDFTQTP PGMLALDNML YLAKVHQDTY IRIVLENSSR EDKHECPFGR SAIELTKMLC EILQVGELPN EGRNDYHPMF FTHDRAFEEL FGICIQLLNK TWKEMRATAE DFNKVMQVVR EQITRALPSK PNSLDQFKSK LRSLSYSEIL RLRQSERMSQ DDFQSPPIVE LREKIQPEIL ELIKQQLNR LCEGSSFRKI GNRRRQERFW YCRLALNHKV LHYGDLDDNP QGEVTFESLQ EKIPVADIKA IVTGKDCPHM KEKSALKQNK EVLELAFSIL YDPDETLNFI APNKYEYCIW IDGLSALLGK DMSELTKSD LDTLLSMEMK LRLLDLENIQ IPEAPPIPK EPSSYDFVYH YG

## Product Details

---

Characteristics: Human ELMO2 full-length ORF ( AAH00143, 1 a.a. - 632 a.a.) recombinant protein with GST-tag at N-terminal.

Purification: in vitro wheat germ expression system

---

## Target Details

---

Target: ELMO2

Alternative Name: ELMO2 ([ELMO2 Products](#))

Background: Full Gene Name: engulfment and cell motility 2  
Synonyms: CED-12,CED12,ELMO-2,FLJ11656,KIAA1834

Gene ID: 63916

---

## Application Details

---

Application Notes: Optimal working dilution should be determined by the investigator.

Comment: Preparation method: in vitro, wheat germ expression system  
Product Quality tested by: 12.5% SDS-PAGE Stained with Coomassie Blue.

Restrictions: For Research Use only

---

## Handling

---

Buffer: 50 mM Tris-HCl, 10 mM reduced Glutathione, pH =8.0 in the elution buffer.

Handling Advice: Aliquot to avoid repeated freezing and thawing.

Storage: -80 °C

Storage Comment: Best use within three months from the date of receipt of this protein.

---

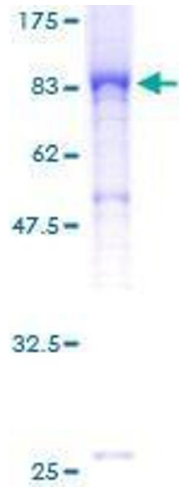


Image 1.