



Datasheet for ABIN1352740

Embigin Protein (EMB) (AA 1-327) (GST tag)



[Go to Product page](#)

1 Image

Overview

Quantity:	10 µg
Target:	Embigin (EMB)
Protein Characteristics:	AA 1-327
Origin:	Human
Source:	Wheat germ
Protein Type:	Recombinant
Purification tag / Conjugate:	This Embigin protein is labelled with GST tag.
Application:	ELISA, Western Blotting (WB), Antibody Array (AA), Affinity Purification (AP)

Product Details

Purpose:	EMB (Human) Recombinant Protein (P01)
Sequence:	MRALPGLLEA RARTPRLLLL QCLLAAARPS SADGSAPDSP FTSPPLREEI MANNFSLESH NLSLTEHSSM PVEKNITLER PSNVNLTQCF TTSGDLNAV NVTWKKDGEQL ENNYLVSATG STLYTQYRFT IINSKQMGSY SCFFREEKEQ RGTFFNFKVPE LHGKNKPLIS YVGDSTVLTC KCQNCFPLNW TWYSSNGSVK VPVGVMNKY VINGTYANET KLKITQLLEE DGESYWCRAL FQLGESEEH IELVLSYLVP LKPFLVIVAE VILLVATILL CEKYTQKKKK HSDEGKEFEQ IEQLKSSDDSN GIENNVPRHR KNESLGQ
Characteristics:	Human EMB full-length ORF (NP_940851.1, 1 a.a. - 327 a.a.) recombinant protein with GST-tag at N-terminal.
Purification:	in vitro wheat germ expression system

Target Details

Target:	Embigin (EMB)
Alternative Name:	EMB (EMB Products)
Background:	Full Gene Name: embigin homolog (mouse) Synonyms: MGC71745
Gene ID:	133418
NCBI Accession:	NM_198449

Application Details

Application Notes:	Optimal working dilution should be determined by the investigator.
Comment:	Preparation method: in vitro, wheat germ expression system Product Quality tested by: 12.5% SDS-PAGE Stained with Coomassie Blue.
Restrictions:	For Research Use only

Handling

Buffer:	50 mM Tris-HCl, 10 mM reduced Glutathione, pH =8.0 in the elution buffer.
Handling Advice:	Aliquot to avoid repeated freezing and thawing.
Storage:	-80 °C
Storage Comment:	Best use within three months from the date of receipt of this protein.

Images

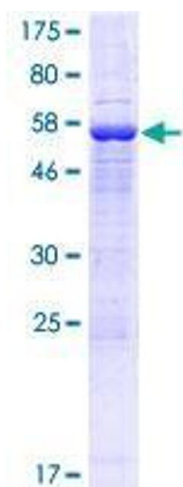


Image 1.