

Datasheet for ABIN1352746

Crossover junction endonuclease EME1 (EME1) (AA 1-583) protein (GST tag)



[Go to Product page](#)

1 Image

Overview

Quantity:	10 µg
Target:	Crossover junction endonuclease EME1 (EME1)
Protein Characteristics:	AA 1-583
Origin:	Human
Source:	Wheat germ
Protein Type:	Recombinant
Purification tag / Conjugate:	GST tag
Application:	ELISA, Western Blotting (WB), Antibody Array (AA), Affinity Purification (AP)

Product Details

Purpose:	EME1 (Human) Recombinant Protein (P01)
Sequence:	<p>MALKKSSPSL DSGDSDSEEL PTF AFLKKEP SSTKRRQPER EEKIVVVDIS DCEASCPPAP ELFSPPVPDI AETVTQTQPV RLLSSESEDE EEFIPLAQRL TCKFLTHKQL SPEDSSSPVK SVLDHQNNEG ASCDWKKPFP KIPEVPLHDT PERSAADNKD LILDPCQQLP AYLSTCPGQS SSLAVTKTNS DILPPQKTK PSQKVQGRGS HGCRQQRQAR QKESTLRRQE RKNAALVTRM KAQRPEECLK HIIVLDPVL LQMEGGGQLL GALQTMERC VIEAQAVPCS VTWRRRAGPS EDREDWVEEP TVLVLLRAEA FVSMIDNGKQ GSLDSTMKGK ETLQGFVTDI TAKTAGKALS LVIVDQEKCF SLELLFFDFL PCTSAQNPPR RGKQGANKQT KKQQQRQPEA SIGSMVSRVD AEEALVDLQL HTEAQAQIVQ SWKELADFTC AFTKAVAEAP FKCLRDETTF SFCLESDWAG GVKVDLAGRG LALVWRRQIQ QLN RVSLEMA SAVVNAYPSP QLLVQAYQQC FSDKERQNLL ADIQVRRGEG VTSTSRRIGP ELSRRIYLQM TTLQPHLSLD SAD</p>
Characteristics:	Human EME1 full-length ORF (AAH16470.1, 1 a.a. - 583 a.a.) recombinant protein with GST-tag

Product Details

at N-terminal.

Purification: in vitro wheat germ expression system

Target Details

Target: Crossover junction endonuclease EME1 (EME1)

Alternative Name: EME1 ([EME1 Products](#))

Background: Full Gene Name: essential meiotic endonuclease 1 homolog 1 (S. pombe)
Synonyms: FLJ31364,MMS4L

Gene ID: 146956

Application Details

Application Notes: Optimal working dilution should be determined by the investigator.

Comment: Preparation method: in vitro, wheat germ expression system
Product Quality tested by: 12.5% SDS-PAGE Stained with Coomassie Blue.

Restrictions: For Research Use only

Handling

Buffer: 50 mM Tris-HCl, 10 mM reduced Glutathione, pH =8.0 in the elution buffer.

Handling Advice: Aliquot to avoid repeated freezing and thawing.

Storage: -80 °C

Storage Comment: Best use within three months from the date of receipt of this protein.

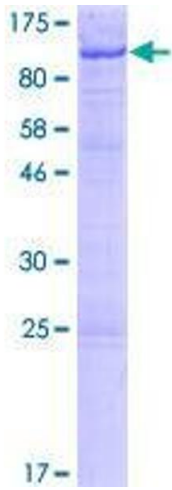


Image 1.