

Datasheet for ABIN1352749

**Collagen, Type XXVI, alpha 1 (COL26A1) (AA 380-440) protein  
(GST tag)**[Go to Product page](#)**1** Image

## Overview

Quantity:	10 µg
Target:	Collagen, Type XXVI, alpha 1 (COL26A1)
Protein Characteristics:	AA 380-440
Origin:	Human
Source:	Wheat germ
Protein Type:	Recombinant
Purification tag / Conjugate:	GST tag
Application:	ELISA, Western Blotting (WB), Antibody Array (AA), Affinity Purification (AP)

## Product Details

Purpose:	EMID2 (Human) Recombinant Protein (Q01)
Sequence:	ILEHMIGIHD PLASPEGGSG QDAALRANLK MKRGGGAQPDG VLAALLGPDP GQKSVDQASS R
Characteristics:	Human EMID2 partial ORF ( NP_597714, 380 a.a. - 440 a.a.) recombinant protein with GST-tag at N-terminal.
Purification:	in vitro wheat germ expression system

## Target Details

Target:	Collagen, Type XXVI, alpha 1 (COL26A1)
Alternative Name:	EMID2 ( <a href="#">COL26A1 Products</a> )
Background:	Full Gene Name: EMI domain containing 2

## Target Details

Synonyms: COL26A1,EMI6,EMU2,MGC129848,hEmu2

Gene ID: 136227

NCBI Accession: [NM\\_133457](#)

## Application Details

Application Notes: Optimal working dilution should be determined by the investigator.

Comment: Preparation method: in vitro, wheat germ expression system  
Product Quality tested by: 12.5% SDS-PAGE Stained with Coomassie Blue.

Restrictions: For Research Use only

## Handling

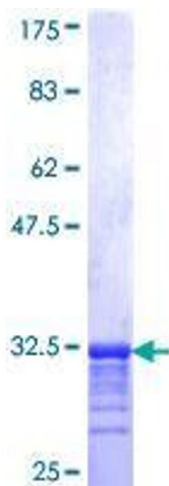
Buffer: 50 mM Tris-HCl, 10 mM reduced Glutathione, pH =8.0 in the elution buffer.

Handling Advice: Aliquot to avoid repeated freezing and thawing.

Storage: -80 °C

Storage Comment: Best use within three months from the date of receipt of this protein.

## Images



**Image 1.**