



Datasheet for ABIN1352773
F4/80 Protein (AA 1-821) (GST tag)



[Go to Product page](#)

1 Image

Overview

Quantity:	10 µg
Target:	F4/80 (EMR1)
Protein Characteristics:	AA 1-821
Origin:	Human
Source:	Wheat germ
Protein Type:	Recombinant
Purification tag / Conjugate:	This F4/80 protein is labelled with GST tag.
Application:	Western Blotting (WB), ELISA, Affinity Purification (AP), Antibody Array (AA)

Product Details

Purpose:	EMR1 (Human) Recombinant Protein (P01)
Sequence:	MRGFNLLLFW GCCVMHSWEG HIRPTRKPNT KGNNCRDSTL CPAYATCTNT VDSYYCACKQ GFLSSNGQNH FKDPGVRCKD IDECSQSPQP CGPNSSCKNL SGRYKCSCLD GFSSPTGNDW VPGKPGNFSC TDINECLTSS VCPFHSDCVN SMGSYSCSCQ VGFISRSTC EDVDECADPR ACPEHATCNN TVGNYSCFCN PGFESSSGHL SFQGLKASCE DIDECTEMCP INSTCTNTPG SYFCTCHPGF APSNGQLNFT DQGVVECRDID ECRQDPSTCG PNSICTNALG SYSCGCIAGF HPNPEGSQKD GNFSQRVLF KCKEDVIPDN KQIQCCQEGT AVKPAYVSFC AQINNIFSVL DKVCENKTTV VSLKNTTESF VPVLKQISTW TKFTKEETSS LATVFLESVE SMTLASFWKP SANITPAVRT EYLDIESKVI NKECSEENVTL DLVAKGDKM KIGCSTIEES ESTETTGVAF VSFVGMESVL NERFFKDHQA PLTTSEIKLK MNSRVVGGIM TGEKKDGFSD PIYTLENIQ PKQKFERPIC VSWSTDVKGK RWTSFGCVIL EASETYTICS CNQMANLAI MASGELTMGC AIIAGFLHYL FLACFFWMLV EAVILFLMVR NLKVVNYFSS RNIKMLHICA FGYGLPMLVW

Product Details

VISASVQPQG YGMHNRCLWN TETGFIWSFL GPVCTVIVIN SLLLTWTLWI LRQLSSVNA
EVSTLKDTRL LTFKAFAQLF ILGCSWVLGI FQIGPVAGVM AYLFTIINSL QGAFIFLIHC
LLNGQVREEY KRWITGKTKP SSQSQTSRIL LSSMPSASKT G

Characteristics: Human EMR1 full-length ORF (AAH59395.1, 1 a.a. - 821 a.a.) recombinant protein with GST-tag at N-terminal.

Purification: in vitro wheat germ expression system

Target Details

Target: F4/80 (EMR1)

Alternative Name: EMR1 ([EMR1 Products](#))

Background: Gene: egf-like module containing, mucin-like, hormone receptor-like 1
Synonyms: TM7LN3

Gene ID: 2015

Application Details

Application Notes: Optimal working dilution should be determined by the investigator.

Restrictions: For Research Use only

Handling

Buffer: 50 mM Tris-HCl, 10 mM reduced Glutathione, pH =8.0 in the elution buffer.

Handling Advice: Aliquot to avoid repeated freezing and thawing.

Storage: -80 °C

Storage Comment: Best use within three months from the date of receipt of this protein.

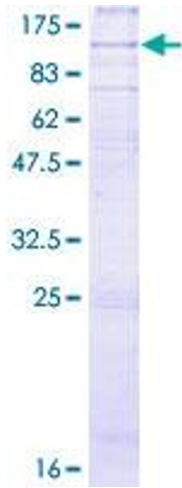


Image 1.