



[Go to Product page](#)

Datasheet for ABIN1352775

## EMR4P Protein (AA 21-93) (GST tag)

### 1 Image

#### Overview

Quantity:	10 µg
Target:	EMR4P
Protein Characteristics:	AA 21-93
Origin:	Human
Source:	Wheat germ
Protein Type:	Recombinant
Purification tag / Conjugate:	This EMR4P protein is labelled with GST tag.
Application:	ELISA, Western Blotting (WB), Antibody Array (AA), Affinity Purification (AP)

#### Product Details

Purpose:	EMR4 (Human) Recombinant Protein (Q01)
Sequence:	GSEAKNSGAS CPPCPKYASC HNSTHCTCED GFRARSGRTY FHDSSEKCED INECETGLAK CKYKAYCRNK VGG
Characteristics:	Human EMR4 partial ORF ( XP_377506, 21 a.a. - 93 a.a.) recombinant protein with GST-tag at N-terminal.
Purification:	in vitro wheat germ expression system

#### Target Details

Target:	EMR4P
Alternative Name:	EMR4P ( <a href="#">EMR4P Products</a> )

## Target Details

Background:	Full Gene Name: egf-like module containing, mucin-like, hormone receptor-like 4 pseudogene Synonyms: EMR4,FIRE,GPR127,PGR16
Gene ID:	326342
NCBI Accession:	<a href="#">XM_377506</a>

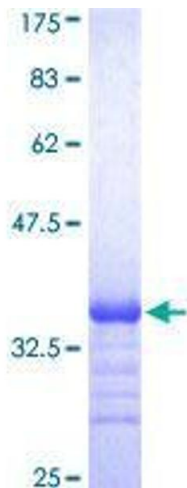
## Application Details

Application Notes:	Optimal working dilution should be determined by the investigator.
Comment:	Preparation method: in vitro, wheat germ expression system Product Quality tested by: 12.5% SDS-PAGE Stained with Coomassie Blue.
Restrictions:	For Research Use only

## Handling

Buffer:	50 mM Tris-HCl, 10 mM reduced Glutathione, pH =8.0 in the elution buffer.
Handling Advice:	Aliquot to avoid repeated freezing and thawing.
Storage:	-80 °C
Storage Comment:	Best use within three months from the date of receipt of this protein.

## Images



**Image 1.**