



[Go to Product page](#)

Datasheet for ABIN1352803

ENO1P1 Protein (AA 1-388) (GST tag)

1 Image

Overview

Quantity:	10 µg
Target:	ENO1P1
Protein Characteristics:	AA 1-388
Origin:	Human
Source:	Wheat germ
Protein Type:	Recombinant
Purification tag / Conjugate:	This ENO1P1 protein is labelled with GST tag.
Application:	Antibody Array (AA), Affinity Purification (AP), ELISA, Western Blotting (WB)

Product Details

Purpose:	ENO1P (Human) Recombinant Protein (P01)
Sequence:	MSILKIHARE LFDSRGNPTV EVDLFTSEGL FRAAVPSGAS TGIYEVLELQ DNDKTRYMGK GVSKPVEPIN KTIAPVLVSK KLVNTEQEKI DKLMIEMDGT ENKSKFGANA ILGVSLAACK ASAVEKGVPL YHHIADLSGN SKVILPVPVF NVINGSSHAV TKLAMQEFMV LPVGAANFRE AMPIGAEVYH SLKNVIKEY GKDATGVGDG GAFAPNILEN KEGLELLKTA IGKAGYTDKV IVSMDVEASE FFRSGKYDLE FKFLDDPTRY ISPDCLADLY KSFINKYPVV STEDPFDQDD WGAWQKFTAS AGIQVVEDDL RVTNPKRTAS AVNEKKCNCL LLKVNQIRSV TESLQACKLA QANGWCVMVP HHSGETENTF ITDLVVGL
Characteristics:	Human ENO1P full-length ORF (AAH46928.1, 1 a.a. - 388 a.a.) recombinant protein with GST-tag at N-terminal.
Purification:	in vitro wheat germ expression system

Target Details

Target:	EN01P1
Alternative Name:	EN01P (EN01P1 Products)
Background:	Full Gene Name: enolase 1, (alpha) pseudogene Synonyms:
Gene ID:	2025

Application Details

Application Notes:	Optimal working dilution should be determined by the investigator.
Comment:	Preparation method: in vitro, wheat germ expression system Product Quality tested by: 12.5% SDS-PAGE Stained with Coomassie Blue.
Restrictions:	For Research Use only

Handling

Buffer:	50 mM Tris-HCl, 10 mM reduced Glutathione, pH =8.0 in the elution buffer.
Handling Advice:	Aliquot to avoid repeated freezing and thawing.
Storage:	-80 °C
Storage Comment:	Best use within three months from the date of receipt of this protein.

Images

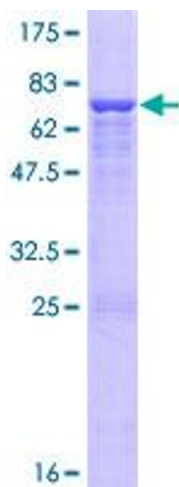


Image 1.