



[Go to Product page](#)

Datasheet for ABIN1352813

ENO3 Protein (AA 228-277) (GST tag)

1 Image

Overview

Quantity:	10 µg
Target:	ENO3
Protein Characteristics:	AA 228-277
Origin:	Human
Source:	Wheat germ
Protein Type:	Recombinant
Purification tag / Conjugate:	This ENO3 protein is labelled with GST tag.
Application:	Western Blotting (WB), ELISA, Antibody Array (AA), Affinity Purification (AP)

Product Details

Purpose:	ENO3 (Human) Recombinant Protein (Q01)
Sequence:	KTAIQAAGYP DKVIGMDVA ASEFYRNGKY DLDFKSPDDP ARHITGEKLG
Characteristics:	Human ENO3 partial ORF (NP_001967, 228 a.a. - 277 a.a.) recombinant protein with GST-tag at N-terminal.
Purification:	in vitro wheat germ expression system

Target Details

Target:	ENO3
Alternative Name:	ENO3 (ENO3 Products)
Background:	Full Gene Name: enolase 3 (beta, muscle)

Target Details

Synonyms: MSE

Gene ID: 2027

NCBI Accession: [NM_001976](#)

Application Details

Application Notes: Optimal working dilution should be determined by the investigator.

Comment: Preparation method: in vitro, wheat germ expression system
Product Quality tested by: 12.5% SDS-PAGE Stained with Coomassie Blue.

Restrictions: For Research Use only

Handling

Buffer: 50 mM Tris-HCl, 10 mM reduced Glutathione, pH =8.0 in the elution buffer.

Handling Advice: Aliquot to avoid repeated freezing and thawing.

Storage: -80 °C

Storage Comment: Best use within three months from the date of receipt of this protein.

Images

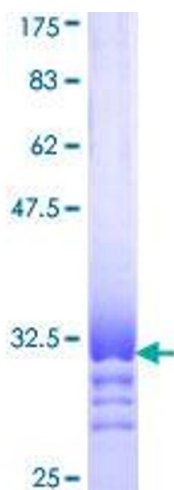


Image 1.