



[Go to Product page](#)

Datasheet for ABIN1352827

## ENPP4 Protein (AA 1-453) (GST tag)

### 1 Image

#### Overview

Quantity:	10 µg
Target:	ENPP4
Protein Characteristics:	AA 1-453
Origin:	Human
Source:	Wheat germ
Protein Type:	Recombinant
Purification tag / Conjugate:	This ENPP4 protein is labelled with GST tag.
Application:	ELISA, Western Blotting (WB), Antibody Array (AA), Affinity Purification (AP)

#### Product Details

Purpose:	ENPP4 (Human) Recombinant Protein (P01)
Sequence:	MKLLVILLFS GLITGFRSDS SSSLPPKLLL VSFDFRADY LKNYEFPHLQ NFIKEGVLVE HVKNVFITKT FPNHYSIVTG LYEESHGIVA NSMYDAVTKK HFSDSNDKDP FWWNEAVPIW VTNQLQENRS SAAAMWPGTD VPIHDTISSY FMNYNSSVSF EERLNNITMW LNNSNPPVTF ATLYWEEPDA SGHKYGPEDK ENMSRVLKKI DDLIGDLVQR LKMLGLWENL NVIITSDHGM TQCSQDRLIN LDSCIDHSYY TLIDLSPVAA ILPKINRTEV YNKLKNCSPH MNVYLKEDIP NRFYYQHNDR IQPIILVADE GWTIVLNESS QKLGDHGYDN SLPSMHPFLA AHGPAFHKGY KHSTINIVDI YPMMCHILGL KPHPNNGTFG HTKCLLDVQW CINLPEAIAI VIGSLLVLTM LTCLIIIMQN RLSVPRPFSR LQLQEDDDDP LIG
Characteristics:	Human ENPP4 full-length ORF ( NP_055751.1, 1 a.a. - 453 a.a.) recombinant protein with GST-tag at N-terminal.

## Product Details

---

Purification: in vitro wheat germ expression system

## Target Details

---

Target: ENPP4

Alternative Name: ENPP4 ([ENPP4 Products](#))

Background: Full Gene Name: ectonucleotide pyrophosphatase/phosphodiesterase 4 (putative function)  
Synonyms: KIAA0879,NPP4

Gene ID: 22875

NCBI Accession: [NM\\_014936](#)

## Application Details

---

Application Notes: Optimal working dilution should be determined by the investigator.

Comment: Preparation method: in vitro, wheat germ expression system  
Product Quality tested by: 12.5% SDS-PAGE Stained with Coomassie Blue.

Restrictions: For Research Use only

## Handling

---

Buffer: 50 mM Tris-HCl, 10 mM reduced Glutathione, pH =8.0 in the elution buffer.

Handling Advice: Aliquot to avoid repeated freezing and thawing.

Storage: -80 °C

Storage Comment: Best use within three months from the date of receipt of this protein.

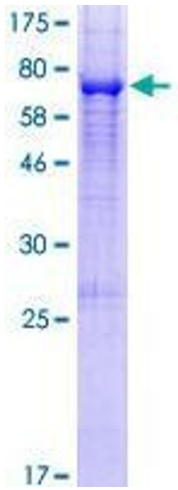


Image 1.