



[Go to Product page](#)

Datasheet for ABIN1352833

ENPP7 Protein (AA 1-458) (GST tag)

1 Image

Overview

Quantity:	10 µg
Target:	ENPP7
Protein Characteristics:	AA 1-458
Origin:	Human
Source:	Wheat germ
Protein Type:	Recombinant
Purification tag / Conjugate:	This ENPP7 protein is labelled with GST tag.
Application:	Western Blotting (WB), ELISA, Antibody Array (AA), Affinity Purification (AP)

Product Details

Purpose:	ENPP7 (Human) Recombinant Protein (P01)
Sequence:	MRGPAVLLTV ALATLLAPGA GAPVQSQGSQ NKLLLVSF DG FRWNYDQD VD TPNLDAMARD GVKARYMTPA FVTMTSPCHF TLVTGKYIEN HGVVHNMYYN TTSKVKLPYH ATLG IQRWWD NGSVPIWITA QRQGLRAGSF FYPGGNVTYQ GVAVTRSRKE GIAHNYKNET EWRANIDTVM AWFTEEDLDL VTLYFGEPDS TGHRYGPESP ERREMVRQVD RTVGYLRESI ARNH LTDRLN LIITSDHGMT TVDKRAGDLV EFHKFPNFTF RDIEFELLDY GPNGMLLPKE GRLEKVYDAL KDAHPKLVHY KKEAFPEAFH YANNPRVTP LMYSDLGYVI HGRIN VQFNN GEHGF DNKDM DMKTIFRAVG PSFRAGLEVE PFESVHVYEL MCRL LGIVPE ANDGHLATLL PMLHTESALP PDGRPTLLPK GRSALPPSSR PLLVMG LLGT VILLSEVA
Characteristics:	Human ENPP7 full-length ORF (AAH41453.2, 1 a.a. - 458 a.a.) recombinant protein with GST-tag at N-terminal.

Product Details

Purification: in vitro wheat germ expression system

Target Details

Target: ENPP7

Alternative Name: ENPP7 ([ENPP7 Products](#))

Background: Full Gene Name: ectonucleotide pyrophosphatase/phosphodiesterase 7
Synonyms: ALK-SMase,MGC50179

Gene ID: 339221

Application Details

Application Notes: Optimal working dilution should be determined by the investigator.

Comment: Preparation method: in vitro, wheat germ expression system
Product Quality tested by: 12.5% SDS-PAGE Stained with Coomassie Blue.

Restrictions: For Research Use only

Handling

Buffer: 50 mM Tris-HCl, 10 mM reduced Glutathione, pH =8.0 in the elution buffer.

Handling Advice: Aliquot to avoid repeated freezing and thawing.

Storage: -80 °C

Storage Comment: Best use within three months from the date of receipt of this protein.

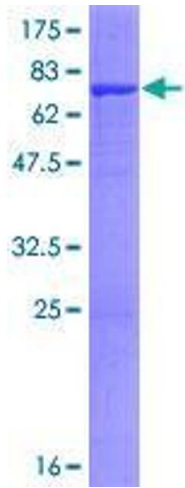


Image 1.