

Datasheet for ABIN1352855

ENTPD6 Protein (AA 386-484) (GST tag)



[Go to Product page](#)

1 Image

Overview

Quantity:	10 µg
Target:	ENTPD6
Protein Characteristics:	AA 386-484
Origin:	Human
Source:	Wheat germ
Protein Type:	Recombinant
Purification tag / Conjugate:	This ENTPD6 protein is labelled with GST tag.
Application:	ELISA, Western Blotting (WB), Antibody Array (AA), Affinity Purification (AP)

Product Details

Purpose:	ENTPD6 (Human) Recombinant Protein (Q01)
Sequence:	YDLAAGVGLI DAEKGGSLVV GDFEIAAKYV CRTLETQPQS SPFSCMDLTY VSLLLQEFGF PRSKVLKLTR KIDNVETSWA LGAIFHYIDS LNRQKSPAS
Characteristics:	Human ENTPD6 partial ORF (NP_001238, 386 a.a. - 484 a.a.) recombinant protein with GST-tag at N-terminal.
Purification:	in vitro wheat germ expression system

Target Details

Target:	ENTPD6
Alternative Name:	ENTPD6 (ENTPD6 Products)

Target Details

Background:	Full Gene Name: ectonucleoside triphosphate diphosphohydrolase 6 (putative function) Synonyms: CD39L2,DKFZp781G2277,DKFZp781K21102,FLJ36711,IL-6SAG,IL6ST2,NTPDase-6,dJ738P15.3
Gene ID:	955
NCBI Accession:	NM_001247

Application Details

Application Notes:	Optimal working dilution should be determined by the investigator.
Comment:	Preparation method: in vitro, wheat germ expression system Product Quality tested by: 12.5% SDS-PAGE Stained with Coomassie Blue.
Restrictions:	For Research Use only

Handling

Buffer:	50 mM Tris-HCl, 10 mM reduced Glutathione, pH =8.0 in the elution buffer.
Handling Advice:	Aliquot to avoid repeated freezing and thawing.
Storage:	-80 °C
Storage Comment:	Best use within three months from the date of receipt of this protein.

Images

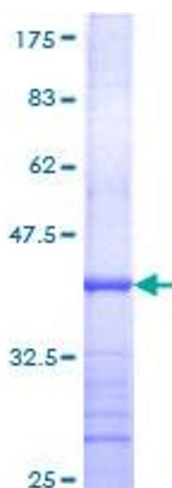


Image 1.