



[Go to Product page](#)

Datasheet for ABIN1352869

EP400NL Protein (AA 1-419) (GST tag)

1 Image

Overview

Quantity:	10 µg
Target:	EP400NL
Protein Characteristics:	AA 1-419
Origin:	Human
Source:	Wheat germ
Protein Type:	Recombinant
Purification tag / Conjugate:	This EP400NL protein is labelled with GST tag.
Application:	ELISA, Western Blotting (WB), Antibody Array (AA), Affinity Purification (AP)

Product Details

Purpose:	EP400NL (Human) Recombinant Protein (P01)
Sequence:	<p>MQHVSSSQSS QRHVQWPGAC PGAGEEQPAC SQPSLPLTLP SPSHQLQQLM VQTQSPTQPS</p> <p>PGPGQALQNV RAGAPGGLG LCSSSPTGDF VDASVLRQI SLSPSSGGHF VFQDGSGLTQ</p> <p>IAQGAQVQLQ HPGTPITVRE RRPSQPHTQS GGTIHHLGPO SPAAAGGAGL QPLASPSHIT</p> <p>TANLPPQISS IIQGQLVQQQ QVLQGPPLPR PLGFERTPGV LLPGAGGAAG FGMTSPPPPPT</p> <p>SPSRVAVPPG LSSLPLTSVG NTGMKKVPPK LEEIPPASPE MAQMRKQCLD YHHQEMQALK</p> <p>EVFKEYLIEL FFLQHFQGNM MDFLAFKERL YGPLQAYLRQ NDLIDIEEEEE EHFEVINDEV</p> <p>KVVARKHGQP GTPVAIATQL PPRTSAAFPA QQQPLQVLSG GSTVQLPRLS SLGFEDSMC</p>
Characteristics:	Human EP400NL full-length ORF (AAH66974.1, 1 a.a. - 419 a.a.) recombinant protein with GST-tag at N-terminal.
Purification:	in vitro wheat germ expression system

Target Details

Target:	EP400NL
Alternative Name:	EP400NL (EP400NL Products)
Background:	Full Gene Name: EP400 N-terminal like Synonyms: DKFZp434l225,FLJ33915,FLJ44224,FLJ46340,MGC87589
Gene ID:	347918

Application Details

Application Notes:	Optimal working dilution should be determined by the investigator.
Comment:	Preparation method: in vitro, wheat germ expression system Product Quality tested by: 12.5% SDS-PAGE Stained with Coomassie Blue.
Restrictions:	For Research Use only

Handling

Buffer:	50 mM Tris-HCl, 10 mM reduced Glutathione, pH =8.0 in the elution buffer.
Handling Advice:	Aliquot to avoid repeated freezing and thawing.
Storage:	-80 °C
Storage Comment:	Best use within three months from the date of receipt of this protein.

Images

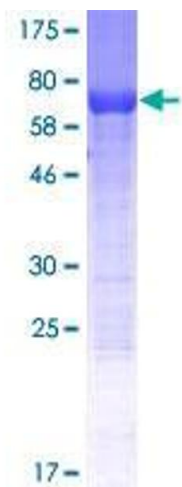


Image 1.