

Datasheet for ABIN1352871

EPAS1 Protein (AA 1-870) (GST tag)

1 Image

1 Publication



[Go to Product page](#)

Overview

Quantity:	2 µg
Target:	EPAS1
Protein Characteristics:	AA 1-870
Origin:	Human
Source:	Wheat germ
Protein Type:	Recombinant
Purification tag / Conjugate:	This EPAS1 protein is labelled with GST tag.
Application:	Western Blotting (WB), ELISA, Antibody Array (AA), Affinity Purification (AP)

Product Details

Purpose:	EPAS1 (Human) Recombinant Protein (P03)
Sequence:	MTADKEKKRS SSERRKEKSR DAARCRRSKE TEVIFYELAHE LPLPHSVSSH LDKASIMRLA ISFLRTHKLL SSVCSENESE AEADQQMDNL YLKALEGFIA VVTQDGMIF LSENISKFMG LTQVELTGHS IFDFTHPCDH EEIRENLSLK NGSFGGKSK DMSTERDFFM RMKCTVTNRG RTVNLKSATW KVLHCTGQVK VYNNCPPHNS LCGYKEPLLS CLIIMCEPIQ HPSHMDIPLD SKTFLSRHSM DMKFTYCDDR ITELIGYHPE ELLGRSAYEF YHALDSENMT KSHQNLCTKG QVVSQYRML AKHGGYVWLE TQGTVIYNPR NLQPQCIMCV NYVLSEIEKN DVVFSMDQTE SLFKPHLMAM NSIFDSSGKG AVSEKSNFLF TKLKEEPEEL AQLAPTPGDA IISLDFGNQN FEESAYGKA ILPPSQPWAT ELRSHSTQSE AGSLPAFTVP QAAAPGSTTP SATSSSSSCS TPNSPEDYYT SLDNDLKIEV IEKLFAMDTE AKDQCSTQTD FNELDLETLA PYIPMDGEDF QLSPICPEER LLAENPQSTP QHCFSAMTNI FQPLAPVAPH SPFLLDKFQQ QLESKKTEPE HRPMSSIFFD AGSKASLPPC CGQASTPLSS MGGRSNTQWP PDPPLHFGPT KWAVGDQRTE

Product Details

FLGAAPLGPP VSPPHVSTFK TRSAKGFGAR GPDVLS PAMV ALSNKLKLR QLEYEEQAFQ
DLGGDPPGG STSHLMWKRM KNLRGGSCPL MPDKPLSANV PNDKFTQNPM RGLGHPLRHL
PLPQPPSAIS PGENSKSRFP PQCYATQYQD YSLSSAHKVS GMASRLLGPS FESYLLPELT
RYDCEVNV PV LGSSTLLQGG DLLRALDQAT

Characteristics:	Human EPAS1 full-length ORF (NP_001421.2, 1 a.a. - 870 a.a.) recombinant protein with GST-tag at N-terminal.
Purification:	in vitro wheat germ expression system

Target Details

Target:	EPAS1
Alternative Name:	EPAS1 (EPAS1 Products)
Background:	Full Gene Name: endothelial PAS domain protein 1 Synonyms: ECYT4,HIF2A,HLF,MOP2,PASD2,bHLHe73
Gene ID:	2034
NCBI Accession:	NM_001430
Pathways:	Signaling Events mediated by VEGFR1 and VEGFR2 , Warburg Effect

Application Details

Application Notes:	Optimal working dilution should be determined by the investigator.
Comment:	Preparation method: in vitro, wheat germ expression system Product Quality tested by: 12.5% SDS-PAGE Stained with Coomassie Blue
Restrictions:	For Research Use only

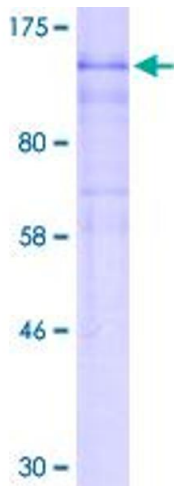
Handling

Buffer:	50 mM Tris-HCl, 10 mM reduced Glutathione, pH =8.0 in the elution buffer.
Handling Advice:	Aliquot to avoid repeated freezing and thawing.
Storage:	-80 °C
Storage Comment:	Best use within three months from the date of receipt of this protein.

Publications

Product cited in: Coltella, Percio, Valsecchi, Cuttano, Guarnerio, Ponzoni, Pandolfi, Melillo, Pattini, Bernardi: "HIF factors cooperate with PML-RAR α to promote acute promyelocytic leukemia progression and relapse." in: **EMBO molecular medicine**, Vol. 6, Issue 5, pp. 640-50, (2014) ([PubMed](#)).

Images



SDS-PAGE

Image 1.