



[Go to Product page](#)

Datasheet for ABIN1352882

EPB41L2 Protein (AA 1-633) (GST tag)

1 Image

Overview

Quantity:	10 µg
Target:	EPB41L2
Protein Characteristics:	AA 1-633
Origin:	Human
Source:	Wheat germ
Protein Type:	Recombinant
Purification tag / Conjugate:	This EPB41L2 protein is labelled with GST tag.
Application:	ELISA, Western Blotting (WB), Antibody Array (AA), Affinity Purification (AP)

Product Details

Purpose:	EPB41L2 (Human) Recombinant Protein (P01)
Sequence:	MTTEVGSVSE VKKDSSQLGT DATKEKPKEV AENQQNQSSD PEEKGSQPP PAAESQSSLR RQKREKETSE SRGISRFIPP WLKKQKSYTL VVAKDGGDKK EPTQAVVEEQ VLDKEEPLPE EQRQAKGDAE EMAQKKQEIK VEVKEEKPSV SKEEKPSVSK VEMQPTELVS KEREKVKET QEDKLEGGAA KRETKEVQTN ELKAEKASQK VTKKTKTVQC KVTLLDGTEY SCDLEKHAKG QVLFDKVCEH LNLLEKDYFG LLFQESPEQK NWLDPAKEIK RQLRNLPWLF TFNVKFYPPD PSQLTEDITR YFLCLQLRQD IASGRLPCSF VTHALLGSYT LQAELGDYDP EEHGSIDLSE FQFAPTQKE LEEKVAELHK THRGLSPAQA DSQFLENAKR LSMYGVDLHH AKDSEGVDIK LGVCANGLLI YKDRLRINRF AWPKILKISY KRSNFYIKVR PALEQFEST IGFKLPNHRA AKRLWKVCVE HHTFYRLVSP EQPPKAKFLT LGSKFRYSGR TQAQTRQAST LIDRPAPHFE RTSSKRVSRS LDGAPIGVMD QSLMKDFPGA AGEISAYGPG LVSIQVVDG DGRREVRSP KAPHLQLIEG KSSHETLNIV EEKSGQRLGK TKE

Product Details

Characteristics: Human EPB41L2 full-length ORF (AAH34718, 1 a.a. - 633 a.a.) recombinant protein with GST-tag at N-terminal.

Purification: in vitro wheat germ expression system

Target Details

Target: EPB41L2

Alternative Name: EPB41L2 ([EPB41L2 Products](#))

Background: Full Gene Name: erythrocyte membrane protein band 4.1-like 2
Synonyms: 4.1-G,DKFZp781D1972,DKFZp781H1755

Gene ID: 2037

Application Details

Application Notes: Optimal working dilution should be determined by the investigator.

Comment: Preparation method: in vitro, wheat germ expression system
Product Quality tested by: 12.5% SDS-PAGE Stained with Coomassie Blue.

Restrictions: For Research Use only

Handling

Buffer: 50 mM Tris-HCl, 10 mM reduced Glutathione, pH =8.0 in the elution buffer.

Handling Advice: Aliquot to avoid repeated freezing and thawing.

Storage: -80 °C

Storage Comment: Best use within three months from the date of receipt of this protein.

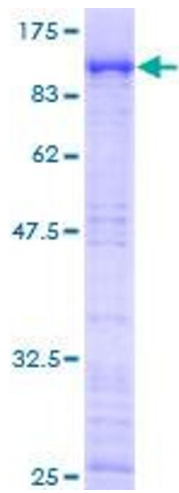


Image 1.