



[Go to Product page](#)

Datasheet for ABIN1352907

EPG5 Protein (AA 1-464) (GST tag)

1 Image

Overview

Quantity:	10 µg
Target:	EPG5
Protein Characteristics:	AA 1-464
Origin:	Human
Source:	Wheat germ
Protein Type:	Recombinant
Purification tag / Conjugate:	This EPG5 protein is labelled with GST tag.
Application:	Antibody Array (AA), Affinity Purification (AP), ELISA, Western Blotting (WB)

Product Details

Purpose:	EPG5 (Human) Recombinant Protein (P01)
Sequence:	MIVCLLFMMI LLAKEVQLVD QTDSPLLSLL GQTSSLSWHL VDIVSYQSVL SYFSSHYP IILAKESYAE LIMKLLKVSA GLSIPTDSQK HLDVAVPKCQA FTHQMVQFLS TLEQNGKITL AVLEQEMSKL LDDIIVFNPP DMDSQTRHMA LSSLFMEVLM MMNNATIPTA EFLRGSIRTW IGQKMHGLVV LPLTAACQS LASVRHMAET TEACITAYFK ESPLNQNSGW GPILVSLQVP ELTMEEFLEQ CLTLGSYLTL VYVLLQCLNS EQTLRNEMKV LLILSKWLEQ VYPSSVEEEA KLFLWWHQVL QLSLIQTEQN DSVLTESVIR ILLLVQSRQN LVAEERLSSG ILGAIGFGRK SPLSNRFRVW ARSMAAFLSV QVPMEDQIRL RPSSELHLTP KAQQALNALE SMASSKQYVE YQDQILQATQ FIRHPGHCLQ DGKSFLALLV NCLYPEVHYL DHIR
Characteristics:	Human EPG5 full-length ORF (AAH36911.1, 1 a.a. - 464 a.a.) recombinant protein with GST-tag at N-terminal.

Product Details

Purification: in vitro wheat germ expression system

Target Details

Target: EPG5

Alternative Name: EPG5 ([EPG5 Products](#))

Background: Full Gene Name: ectopic P-granules autophagy protein 5 homolog (C. elegans)
Synonyms: HEEW1,KIAA1632,hEPG5

Gene ID: 57724

Application Details

Application Notes: Optimal working dilution should be determined by the investigator.

Comment: Preparation method: in vitro, wheat germ expression system
Product Quality tested by: 12.5% SDS-PAGE Stained with Coomassie Blue.

Restrictions: For Research Use only

Handling

Buffer: 50 mM Tris-HCl, 10 mM reduced Glutathione, pH =8.0 in the elution buffer.

Handling Advice: Aliquot to avoid repeated freezing and thawing.

Storage: -80 °C

Storage Comment: Best use within three months from the date of receipt of this protein.

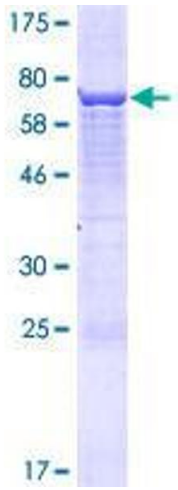


Image 1.