



[Go to Product page](#)

Datasheet for ABIN1352915

EPH Receptor A10 Protein (EPHA10) (AA 444-543) (GST tag)

1 Image

Overview

Quantity:	10 µg
Target:	EPH Receptor A10 (EPHA10)
Protein Characteristics:	AA 444-543
Origin:	Human
Source:	Wheat germ
Protein Type:	Recombinant
Purification tag / Conjugate:	This EPH Receptor A10 protein is labelled with GST tag.
Application:	Western Blotting (WB), ELISA, Antibody Array (AA), Affinity Purification (AP)

Product Details

Purpose:	EPHA10 (Human) Recombinant Protein (Q01)
Sequence:	RYKDSFAAAG YGSLEAVAEM TAQDLVSLGI SLAEHREALL SGISALQARV LQLQGQGVQD NKNLSVIWCL FEWQLLDHCI AGVEGLLPPS SRTGVSRICV
Characteristics:	Human EPHA10 partial ORF (NP_001004338, 444 a.a. - 543 a.a.) recombinant protein with GST-tag at N-terminal.
Purification:	in vitro wheat germ expression system

Target Details

Target:	EPH Receptor A10 (EPHA10)
Alternative Name:	EPHA10 (EPHA10 Products)

Target Details

Background: Full Gene Name: EPH receptor A10
Synonyms: FLJ16103,FLJ33655,MGC43817

Gene ID: 284656

NCBI Accession: [NM_001004338](#)

Pathways: [RTK Signaling](#)

Application Details

Application Notes: Optimal working dilution should be determined by the investigator.

Comment: Preparation method: in vitro, wheat germ expression system
Product Quality tested by: 12.5% SDS-PAGE Stained with Coomassie Blue.

Restrictions: For Research Use only

Handling

Buffer: 50 mM Tris-HCl, 10 mM reduced Glutathione, pH =8.0 in the elution buffer.

Handling Advice: Aliquot to avoid repeated freezing and thawing.

Storage: -80 °C

Storage Comment: Best use within three months from the date of receipt of this protein.

Images

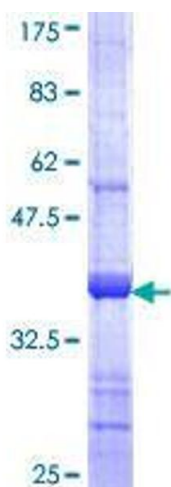


Image 1.