



[Go to Product page](#)

Datasheet for ABIN1352926

EPH Receptor A4 Protein (EPHA4) (AA 887-986) (GST tag)

1 Image

Overview

Quantity:	10 µg
Target:	EPH Receptor A4 (EPHA4)
Protein Characteristics:	AA 887-986
Origin:	Human
Source:	Wheat germ
Protein Type:	Recombinant
Purification tag / Conjugate:	This EPH Receptor A4 protein is labelled with GST tag.
Application:	Western Blotting (WB), ELISA, Antibody Array (AA), Affinity Purification (AP)

Product Details

Purpose:	EPHA4 (Human) Recombinant Protein (Q01)
Sequence:	SLKRTGTESS RPNTALLDPS SPEFSAVVSV GDWLQAIKMD RYKDNFTAAG YTTLEAVVHV NQEDLARIGI TAITHQNKIL SSVQAMRTQM QQMHGMRMPV
Characteristics:	Human EPHA4 partial ORF (NP_004429, 887 a.a. - 986 a.a.) recombinant protein with GST-tag at N-terminal.
Purification:	in vitro wheat germ expression system

Target Details

Target:	EPH Receptor A4 (EPHA4)
Alternative Name:	EPHA4 (EPHA4 Products)

Target Details

Background: Full Gene Name: EPH receptor A4
Synonyms: HEK8,SEK,TYRO1

Gene ID: 2043

NCBI Accession: [NM_004438](#)

Pathways: [RTK Signaling](#)

Application Details

Application Notes: Optimal working dilution should be determined by the investigator.

Comment: Preparation method: in vitro, wheat germ expression system
Product Quality tested by: 12.5% SDS-PAGE Stained with Coomassie Blue.

Restrictions: For Research Use only

Handling

Buffer: 50 mM Tris-HCl, 10 mM reduced Glutathione, pH =8.0 in the elution buffer.

Handling Advice: Aliquot to avoid repeated freezing and thawing.

Storage: -80 °C

Storage Comment: Best use within three months from the date of receipt of this protein.

Images

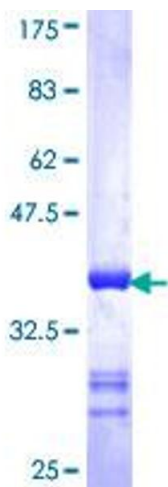


Image 1.