



[Go to Product page](#)

Datasheet for ABIN135293

anti-Ly6C antibody

1 Image

1 Publication

Overview

Quantity:	0.5 mg
Target:	Ly6C (Ly-6C)
Reactivity:	Mouse
Host:	Rat
Clonality:	Monoclonal
Conjugate:	This Ly6C antibody is un-conjugated
Application:	Flow Cytometry (FACS)

Product Details

Immunogen:	L3 cloned CTL cells
Clone:	HK1-4
Isotype:	IgG2c
Specificity:	Mouse Ly-6C, Mr 14-17 kDa
Characteristics:	Rat Anti-Mouse Ly-6C-UNLB
Purification:	Purified

Target Details

Target:	Ly6C (Ly-6C)
Alternative Name:	Ly-6C (Ly-6C Products)
Background:	Ly-6C is a member of the Ly-6 multigene family of type V glycosphosphatidylinositol-anchored

Target Details

cell surface proteins. It is expressed on bone marrow cells, monocytes/macrophages, neutrophils, endothelial cells, and T-cell subsets. Mice with the Ly-6.2 allotype (e.g., AKR, C57BL, C57BR, C57L, DBA/2, PL, SJL, SWR, 129) have subsets of CD4+Ly-6C+ and CD8+Ly-6C+ cells, while Ly-6.1 strains (e.g., A, BALB/c, CBA, C3H/He, DBA/1, NZB) have only CD8+Ly-6C+ lymphocytes. Ly-6C may play a role in the development and maturation of lymphocytes.

Application Details

Application Notes:

- **Applications:** FC - Quality tested , IHC-FS - Reported in literature , Activ - Reported in literature
- **Working Dilutions:** Flow Cytometry Purified (UNLB) antibody 1 g/106 cells FITC, BIOT, and AF488 conjugates 1 g/106 cells PACBLU conjugate 0.3 g/106 cells PE conjugate 0.2 g/106 cells AF647 and AF700 conjugates 0.1 g/106 cells For flow cytometry, the suggested use of these reagents is in a final volume of 100 L

Comment: In vitro activation of T lymphocytes

Sample Volume: 1 mL

Restrictions: For Research Use only

Handling

Concentration: 0.5 mg/mL

Buffer: 0.5 mg of purified immunoglobulin in 1.0 mL of borate buffered saline, pH 8.2. No preservatives or amine-containing buffer salts added

Preservative: Without preservative

Handling Advice: Each reagent is stable for the period shown on the bottle label if stored as directed.

Storage: 4 °C

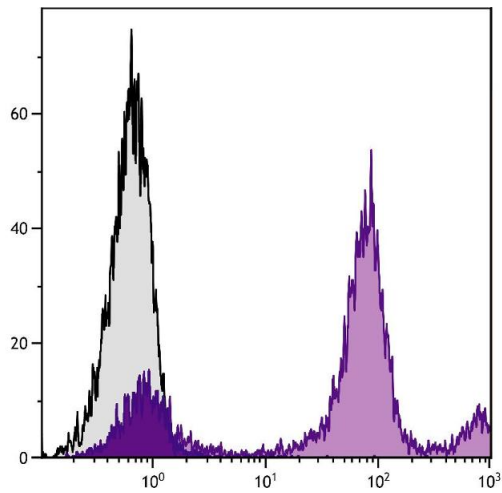
Storage Comment: Store at 2-8°C

Publications

Product cited in: Dogan, Kozhaya, Placek, Gunter, Yigit, Hardy, Plassmeyer, Coatney, Lillard, Bukhari, Kleinberg, Hayes, Arditi, Klapper, Merin, Liang, Gupta, Alpan, Unutmaz: "SARS-CoV-2 specific antibody and neutralization assays reveal the wide range of the humoral immune response to virus." in: **Communications biology**, Vol. 4, Issue 1, pp. 129, (2021) ([PubMed](#)).

Haag, Schneider, Mason, Tuncel, Andersson, Peters, Burkhardt, Holmdahl: "Mass spectrometric

analysis of citrullinated type II collagen reveals new citrulline-specific autoantibodies, which bind to human arthritic cartilage." in: **Arthritis & rheumatology (Hoboken, N.J.)**, (2014) ([PubMed](#)).



Flow Cytometry

Image 1. BALB/c mouse bone marrow cells were stained with Rat Anti-Mouse Ly-6C-PE.