

Datasheet for ABIN1352936

EPH Receptor B1 Protein (EPHB1) (AA 221-320) (GST tag)



[Go to Product page](#)

1 Image

Overview

Quantity:	10 µg
Target:	EPH Receptor B1 (EPHB1)
Protein Characteristics:	AA 221-320
Origin:	Human
Source:	Wheat germ
Protein Type:	Recombinant
Purification tag / Conjugate:	This EPH Receptor B1 protein is labelled with GST tag.
Application:	ELISA, Western Blotting (WB), Antibody Array (AA), Affinity Purification (AP)

Product Details

Purpose:	EPHB1 (Human) Recombinant Protein (Q01)
Sequence:	ARGTCIPNAE EVDVPIKLYC NGDGEWMVPI GRCTCKPGYE PENSVACKAC PAGTFKASQE AEGCSHCPSN SRSPAEASPI CTCRTGYIRA DFDPPEVACT
Characteristics:	Human EPHB1 partial ORF (NP_004432.1, 221 a.a. - 320 a.a.) recombinant protein with GST-tag at N-terminal.
Purification:	in vitro wheat germ expression system

Target Details

Target:	EPH Receptor B1 (EPHB1)
Alternative Name:	EPHB1 (EPHB1 Products)

Target Details

Background: Full Gene Name: EPH receptor B1
Synonyms: ELK,EPHT2,FLJ37986,Hek6,NET

Gene ID: 2047

NCBI Accession: [NM_004441](#)

Pathways: [RTK Signaling](#)

Application Details

Application Notes: Optimal working dilution should be determined by the investigator.

Comment: Preparation method: in vitro, wheat germ expression system
Product Quality tested by: 12.5% SDS-PAGE Stained with Coomassie Blue.

Restrictions: For Research Use only

Handling

Buffer: 50 mM Tris-HCl, 10 mM reduced Glutathione, pH =8.0 in the elution buffer.

Handling Advice: Aliquot to avoid repeated freezing and thawing.

Storage: -80 °C

Storage Comment: Best use within three months from the date of receipt of this protein.

Images

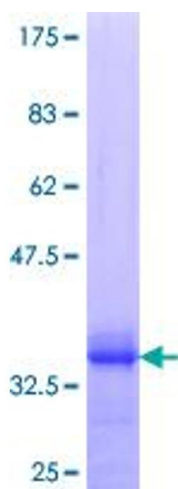


Image 1.